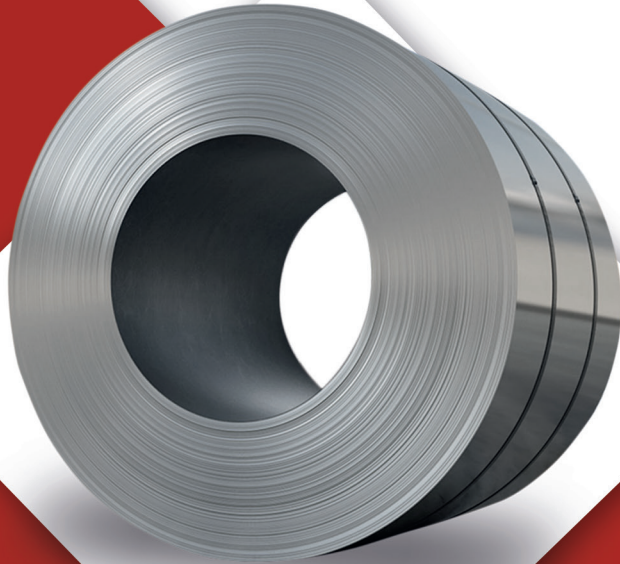


PRICE LIST 2020







About Us

Established in 2019, Mert Krom Metal Isolation Cons. Ind. and Int. Tra. Inc.

Our company has started its activities with galvanized sheet and galvanized sheet types (coils, slitting, plate) and our stocked products that will supply all kinds of materials required for ventilation systems, ventilation duct manufacturing, chimney systems and manufacturing and with the required quality certificates, and continues its activities with our reliable business partnership and 'win-win principle' with sure steps.

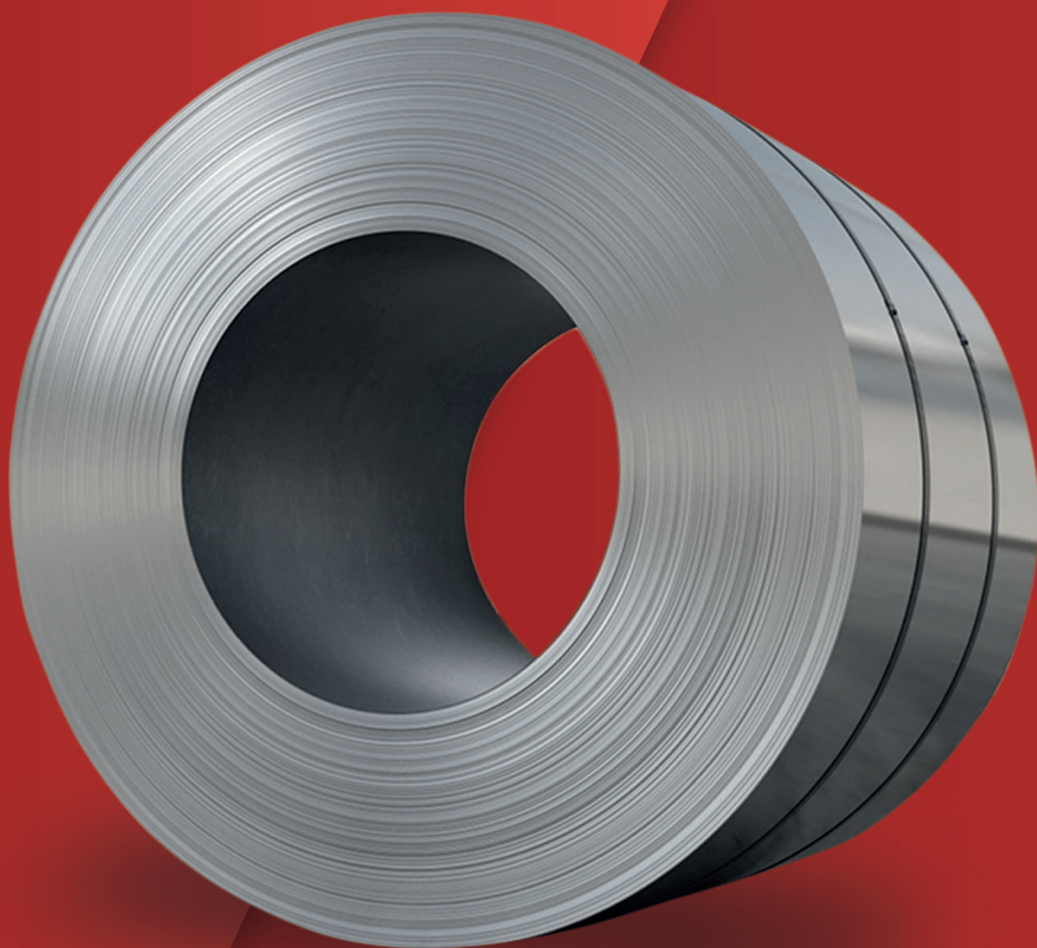




CONTENTS

Galvanized Sheets.....	3-5
Connection Equipments.....	6-10
Point Ventilation Devices.....	11-19
Bvn Ventilation Devices.....	20-36
Air Ducts.....	37-38
Elastomeric Rubber Insulation.....	39-46
Air Conditioner Plate.....	47-48
Flexible Air Ducts.....	49-51
Turbo Ventilators.....	52-54
Ventilation Grilles.....	55-64

Galvanized
SHEETS

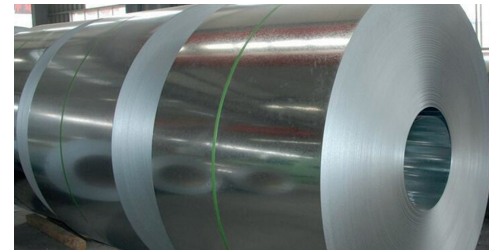


Galvanized Coil Sheet 100A Coating (Zn)



GCR DX51D + Z 100A	0,50*1200
GCR DX51D + Z 100A	0,60*1200
GCR DX51D + Z 100A	0,70*1200
GCR DX51D + Z 100A	0,80*1200
GCR DX51D + Z 100A	0,90*1200
GCR DX51D + Z 100A	1,00*1200
GCR DX51D + Z 100A	1,20*1200

Galvanized Coil Sheet 275A Coating (Zn)



GCR DX51D + Z 275A	0,50*1200
GCR DX51D + Z 275A	0,60*1200
GCR DX51D + Z 275A	0,70*1200
GCR DX51D + Z 275A	0,80*1200
GCR DX51D + Z 275A	0,90*1200
GCR DX51D + Z 275A	1,00*1200
GCR DX51D + Z 275A	1,20*1200

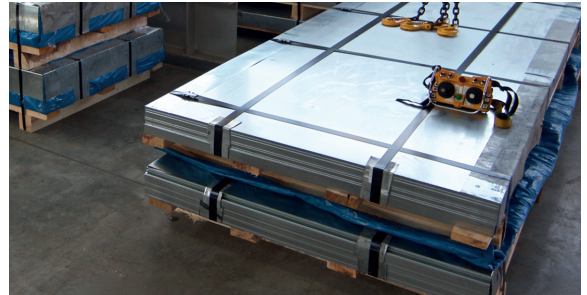
Galvanized Slitting Sheet 1V00A Coating (Zn)



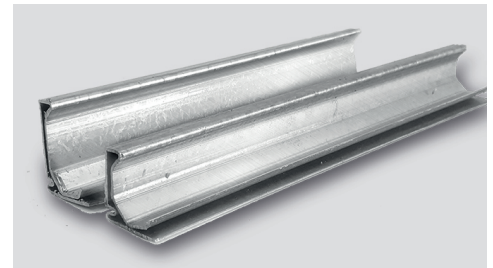
GCR DX51D + Z 100A	0,50*137
GCR DX51D + Z 100A	0,60*137
GCR DX51D + Z 100A	0,70*137
GCR DX51D + Z 100A	0,80*137
GCR DX51D + Z 100A	0,90*137
GCR DX51D + Z 100A	1,00*137
GCR DX51D + Z 100A	1,20*137



Galvanized Plate Sheet 00A Coating (Zn)



GCR DX51D + Z 100A	0,50*1200*2400
GCR DX51D + Z 100A	0,60*1200*2400
GCR DX51D + Z 100A	0,70*1200*2400
GCR DX51D + Z 100A	0,80*1200*2400
GCR DX51D + Z 100A	0,90*1200*2400
GCR DX51D + Z 100A	1,00*1200*2400
GCR DX51D + Z 100A	1,20*1200*2400



Galvanized Flange Profile Sheet 100A Coating (Zn)

GCR DX51D + Z 100A	0,60*87
GCR DX51D + Z 100A	0,60*97
GCR DX51D + Z 100A	0,70*107

Depending on the machine used, it can be manufactured to the required extent.

Connection

EQUIPMENTS





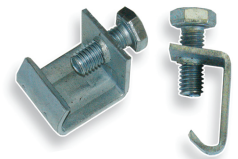
Flange

Type of Material	L (m)	H (mm)	T (mm)	Price €
Galvanized Sheet Plate	4	20	0.60	0,64
Galvanized Sheet Plate	4	25	0.60	0,70
Galvanized Sheet Plate	4	30	0.70	0,88



Corner

Model	WxW (mm)	H (mm)	RØ (mm)	R1 Ø (mm)	Price €
20	66	15	9	6	0,058
25	82	20	9	6	0,076
30	105	24	9	6	0,14



Clip

Type of Material	H (mm)	T (mm)	Price €
DKP Sheet	25	2	0,077
DKP Sheet	30	2	0,088

* Price with bolt.

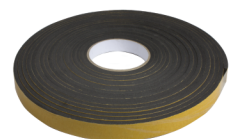
Aluminum Tape

H (mm)	T (mm)	Price €
7,5	18	1,51
7,5	30	3,37
10	18	1,98
10	30	4,53

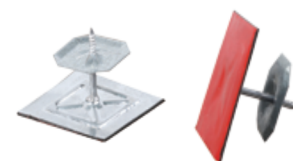


Neoprene Gasket

H (mm)	T (mm)	Length Ø (m)	Price €
15	9	6	0,038
20	9	6	0,044
24	9	6	0,059



Insulation Pin



Length (mm)	Piece of box	Price €
40	500	0,052
60	500	0,058

Sealant and Silicone



Model	Piece of box	Price €
Gray Sealant	25	0,81
Gray Silicone	25	2,33
Transparent Silicone	25	2,44
White Silicone	25	2,33
Red Fireproof Silicone	25	2,44

Connector



Length (m)	W (m)	W1 (mm)	W(mm)	Price €
25	45	60	45	34,53
25	70	100	70	52,66

Rod



Rod Size	Length (Cm)	Price €
M8	2000	1,16
M10	2000	1,74

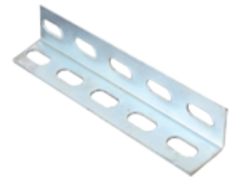
U Profile



Model	Length (m)	Sheet diam (mm)	Price €
30x30x30	2	2,5	4,22
40x40x40	2	3	6,67
50x50x50	2	4	10,89
60x60x60	2	4	18,74



L Profile



Model Size (mm)	Length (m)	Sheet diam (mm)	Price €
30x30	2	2	2,46
30x30	2	2.5	3,04
30x30	2	3	3,51
40x40	2	3	4,57
40x40	2	4	5,85
50x50	2	4	7,38

C Profile



Model Size (mm)	Length (m)	Sheet diam (mm)	Price €
20x35	2	1.2	2,34

Clamp for Threaded Rod



Model Size (mm)	Price €
M8	0,70
M10	0,82

Damper Quadrant



Model Size	Price €
Small damper quadrant	0,70
Square spindle big damper	3,16
Round Spindle big damper quadrant	3,51

Bolt



Model Size	Price €
M8x20 Galvanized Iron Bolts	0,030
M8x25 Galvanized Iron Bolts	0,037
M10x25 Galvanized Iron Bolts	0,077

Nut

Model Size

M8 Galvanized Steel Bolts
M10x25 Galvanized Steel Bolts



Price €

0,02
0,03

Plugged Draw in Anchor

Model Size

M8 Plugged Draw in Anchor
M10 Plugged Draw in Anchor



Price €

0,07
0,11

Washer

Model Size

5/16 Thick Galvanized Washer
3/8 Thick Galvanized Washer



Price €

0,016
0,036

Backdraft Damper

Model Size

Q100 PVC Backdraft Damper
Q125 PVC Backdraft Damper



Price €

0,77
0,90

Plastic Clamp and Crimping Plier

Model Size

Piece of box

Price €

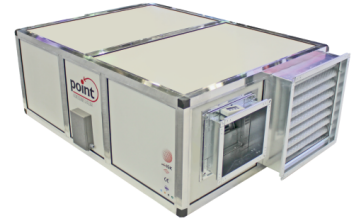
400mm Plastic Clamp (Ø76-Ø102)	100	18,27
550mm Plastic Clamp (Ø127-Ø140)	100	18,27
600mm Plastic Clamp (Ø152-Ø185)	100	19,56
760mm Plastic Clamp (Ø185-Ø203)	100	22,25
900mm Plastic Clamp (Ø203-Ø254)	100	26,23
1200mm Plastic Clamp (Ø305-Ø356)	100	37,82
Plastic Clamp Crimping Plier	-	28.10



POINT

VENTILATION DEVICES





Heat Recovery Device

Model	Flow (m³/h)	Pressure (p)	Speed (d/d)	Frequency (Hz)	Voltage (V)	Heater (Optional)	Price €
PIGK-500	500	150	1450	150	230	2KW	616.28
PIGK-750	750	150	1450	150	230	2KW	649.18
PIGK-1000	1000	150	1450	150	230	3KW	1,001.05
PIGK-1500	1500	150	1450	150	230	4KW	1,080.56
PIGK-2000	2000	150	1450	150	230	6KW	1,405.15
PIGK-3000	3000	150	1450	150	230	7.5KW	1,462.30
PIGK-4000	4000	150	1450	150	230	9KW	1,745.67
PIGK-5000	5000	150	1450	150	230	12KW	2,260.42



Smoke Evacuation Fan

Model	Flow (m³/h)	Speed (d/d)	Power (kW)	Pressure (p)									Price €		
				150	200	250	300	400	500	600	700	800		900	
P-DTF-400A	5000	2850	0.75				5000	4000							705.50
P-DTF-400B	8000	2850	1.5	8000	7600	7100	6540	5000							771.43
P-DTF-400C	8850	2850	2.2		8800	8500	8200	7400	6600	5700					824.12
P-DTF-450A	10300	2850	2.2		10300	10000	9500	8000	6100						824.12
P-DTF-450B	11600	2850	3			11800	11600	11000	9900	8040					955.85
P-DTF-500A	14600	2850	3			14200	13700	12600	11100	8700					955.85
P-DTF-500B	15000	2850	4				15500	14700	13600	12300	10500				1,061.24
P-DTF-560A	16000	2850	3		16700	16000	15200	13200	10800						955.85
P-DTF-560B	17600	2850	4		17600	17300	16800	15500	13700	11500					1,061.24
P-DTF-560C	18800	2850	5.5				18800	17900	17000	16000	14700	13100			1,285.13
P-DTF-630A	17500	1450	3	17500	16500	15000	13800								1,008.55
P-DTF-630B	23000	2850	5.5		24000	23400	22700	21200	19300	17000	14500				1,285.13
P-DTF-630C	26000	2850	7.5				26000	24800	23300	21400	18700	16000			1,403.75
P-DTF-710A	22900	1450	3	22900	21300	19400	17300								1,162.18
P-DTF-710B	25000	1450	4		25000	22700	20000								1,325.53
P-DTF-710C	26800	2850	5.5			26800	26000	24000	22000	20000					1,438.88
P-DTF-710D	31000	2850	7.5			31000	30300	28000	25200	22500					1,557.38
P-DTF-710E	35000	2850	11				35000	33600	32000	30100	19000				2,097.78
P-DTF-800A	26000	1450	3	26000	24000	21500	18300				28200	25800	22000		1,323.19
P-DTF-800B	29000	1450	4	29000	27600	25700	23500	19000							1,486.53
P-DTF-800C	33000	1450	5.5		33000	31500	29800	25200							1,692.04
P-DTF-900A	34600	1450	4	34600	31500	28450	24500								1,486.53
P-DTF-900B	38700	1450	5.5	38700	36500	34600	32000	23000							1,692.04
P-DTF-900C	41000	1450	7.5		41000	39000	37200	32800	27000						1,894.96
P-DTF-1000A	45000	1450	5.5	45000	42000	36000	32000	25000							1,845.78
P-DTF-1000B	47000	1450	7.5		47000	45000	42500	36030	26500						2,048.59
P-DTF-1000C	56000	1450	11		56000	53500	51000	46500	39600						2,483.37
P-DTF-1000D	66000	1450	15			66000	63000	57700	51000						2,625.64
P-DTF-1250A	70000	1450	15		70000	68000	65800	61000	56500	50800	44000	38000			2,625.64
P-DTF-1250B	80000	1450	18.5		80000	78000	75400	69500	63000	55000	47000				3,373.89
P-DTF-1250C	83700	1450	22		83700	82500	80500	75600	70000	64200	58000	50000			3,611.01
P-DTF-1250D	95000	1450	30				95000	90000	84500	79000	72400	65000	54500		4,164.29



POINT VENTILATION DEVICES

Pressurization Fan



Model	Speed (d/d)	Power (kW)	Current (Amp)	Static Pressure Performance Table (Pst / Pa)										Price €			
				0	25	50	75	100	125	150	175	200	250				
P-BF-400A	1450	0,25	0,81	5000	4500	4100	3600	3150	255								493.91
P-BF-450A	1450	0,37	1,20		5800	5350	5000	4650	4200	3250							498.48
P-BF-500A	1450	0,55	1,60			7100	6650	6150	5500	5000							511.59
P-BF-560A	1450	0,55	1,60			9000	8700	8200	7650	7020	6270						511.59
P-BF-630A	1450	0,75	2,10			11500	11100	10500	9950	9200	8400	7200					537.00
P-BF-630B	1450	1,50	3,60				14600	13700	13000	12500	12000	11300	9500				580.00
P-BF-630C	1450	2,20	5,30				17250	16500	16000	15600	15000	1440	13000				643.68
P-BF-630D	1450	3,00	6,60				22000	21000	20300	19500	18800	18000	16000				665.81

Model	Speed (d/d)	Power (kW)	Current (Amp)	Static Pressure Performance Table (Pst / Pa)								Price €					
				100	150	200	250	300	400	500	600		700	800			
P-BF-400-B	2850	0,55	1,30		4000	3600	3350	3000									518.50
P-BF-400-C	2850	1,10	2,50		5250	5000	4800	4500	3900								532.67
P-BF-400-D	2850	1,50	3,45			8000	7800	7500	6800	5700	3400						549.18
P-BF-450-B	2850	3,00	6,50				10800	10400	9600	8500	7200						643.09
P-BF-500-B	2850	4,00	8,20				14000	13700	13000	11800	10500	9300					717.10
P-BF-560-B	2850	5,50	11,80					19600	18600	17650	16400	15100	13000				830.44
P-BF-630-E	2850	7,50	15,80					24000	22600	22600	19300	17500	16000				882.08

Model	Speed (d/d)	Power (kW)	Current (Amp)	Static Pressure Performance Table (Pst / Pa)								Price					
				100	150	200	250	300	400	500	600		700	800			
P-BF-710-A	1450	4,00	8,70			24000	20800	17000									897.31
P-BF-800-A	1450	4,00	8,70		28000	26700	25000	22000	14000								985.13
P-BF-800-B	1450	5,50	11,80		30800	29400	27750	25800	20000								1,085.83
P-BF-800-C	1450	7,50	15,80			34000	33000	31000	25000								1,175.06
P-BF-900-A	1450	5,50	11,80			36000	34500	32800	27500								985.13
P-BF-900-B	1450	7,50	15,80			40000	38300	36700	32800	27000							1,175.06
P-BF-1000-A	1450	5,50	11,80			39800	35600	30000									1,138.76
P-BF-1000-B	1450	7,50	15,80		43000	45000	42800	40450	34500	27000	20000						1,328.81
P-BF-1000-C	1451	11,00	22,50			54000	51000	48000	42200	35000	25000						1,634.07
P-BF-1250-A	1452	11,00	22,50			61000	58900	56000	49850	43200	35000	26000	18600				1,634.07
P-BF-1250-B	1453	15,00	30,00		63000	73000	71000	69000	64800	59800	65350	46800	38000				1,782.90
P-BF-1250-C	1454	22,00	42,00				82000	80400	76300	71800	66800	60700	50000				2,086.53
P-BF-1250-D	1455	30,00	57,00				89600	88000	85000	81500	77600	73000	68000				2,265.11

Roof Type Axial Fan



Model	Speed (d/d)	Power (kW)	Current (Amp)	Static Pressure Performance Table (Pst / Pa)										Price			
				0	25	50	75	100	125	150	175	200	250				
P-CAF-400A	1450	0,25	0,81	5000	4500	4100	3600	3150	255								493.91
P-CAF-450A	1450	0,37	1,20		5800	5350	5000	4650	4200	3250							498.48
P-CAF-500A	1450	0,55	1,60			7100	6650	6150	5500	5000							511.59
P-CAF-560A	1450	0,55	1,60			9000	8700	8200	7650	7020	6270						511.59
P-CAF-630A	1450	0,75	2,10			11500	11100	10500	9950	9200	8400	7200					537.00
P-CAF-630B	1450	1,50	3,60				14600	13700	13000	12500	12000	11300	9500				580.80
P-CAF-630C	1450	2,20	5,30				17250	16500	16000	15600	15000	1440	13000				643.68
P-CAF-630D	1450	3,00	6,60				22000	21000	20300	19500	18800	18000	16000				665.81

Model	Speed (d/d)	Power (kW)	Current (Amp)	Static Pressure Performance Table (Pst / Pa)								Price €					
				100	150	200	250	300	400	500	600		700	800			
P-CAF-400-B	2850	0,55	1,30		4000	3600	3350	3000									518.50
P-CAF-400-C	2850	1,10	2,50		5250	5000	4800	4500	3900								532.67
P-CAF-400-D	2850	1,50	3,45			8000	7800	7500	6800	5700	3400						549.18
P-CAF-450-B	2850	3,00	6,50				10800	10400	9600	8500	7200						643.09
P-CAF-500-B	2850	4,00	8,20				14000	13700	13000	11800	10500	9300					717.10
P-CAF-560-B	2850	5,50	11,80					19600	18600	17650	16400	15100	13000				830.44
P-CAF-630-E	2850	7,50	15,80					24000	22600	22600	19300	17500	16000				882.08

Model	Speed (d/d)	Power (kW)	Current (Amp)	Static Pressure Performance Table (Pst / Pa)								Price €					
				100	150	200	250	300	400	500	600		700	800			
P-CAF-710-A	1450	4,00	8,70			24000	20800	17000									897.31
P-CAF-800-A	1450	4,00	8,70		28000	26700	25000	22000	14000								985.13
P-CAF-800-B	1450	5,50	11,80		30800	29400	27750	25800	20000								1,085.83
P-CAF-800-C	1450	7,50	15,80			34000	33000	31000	25000								1,175.06
P-CAF-900-A	1450	5,50	11,80			36000	34500	32800	27500								985.13
P-CAF-900-B	1450	7,50	15,80			40000	38300	36700	32800	27000							1,175.06
P-CAF-1000-A	1450	5,50	11,80			39800	35600	30000									1,138.76
P-CAF-1000-B	1450	7,50	15,80		43000	45000	42800	40450	34500	27000	20000						1,328.81
P-CAF-1000-C	1451	11,00	22,50			54000	51000	48000	42200	35000	25000						1,634.07
P-CAF-1250-A	1452	11,00	22,50			61000	58900	56000	49850	43200	35000	26000	18600				1,634.07
P-CAF-1250-B	1453	15,00	30,00		63000	73000	71000	69000	64800	59800	65350	46800	38000				1,782.90
P-CAF-1250-C	1454	22,00	42,00				82000	80400	76300	71800	66800	60700	50000				2,086.53
P-CAF-1250-D	1455	30,00	57,00				89600	88000	85000	81500	77600	73000	68000				2,265.11



POINT VENTILATION DEVICES



Rare Blade Cell Aspirators

Model	Flow (m ³ /h)	Pressure (p)	Fan	Motor (kW)	Speed (d/d)	Voltage (V)	Decibel dB(A)	Price €
P-SYH-3000	3000	300	250	0.55	2850	380	84	1,246.72
P-SYH-5000	5000	300	280	1.1	2850	380	88,2	1,344.73
P-SYH-8000	8000	300	315	2.2	2850	380	94,2	1,550.47
P-SYH-10000	10000	300	355	4	28 50	380	95,3	1,621.19
P-SYH-12500	12500	300	355	5,5	2850	380	99,6	1,554.33
P-SYH-15000	15000	300	400	5,5	2850	380	97,9	1,687.35
P-SYH-18000	18000	300	450	5,5	2850	380	96,8	1,913.00
P-SYH-20000	20000	300	450	7,5	2850	380	98,3	1,913.00
P-SYH-22000	22000	300	500	7,5	2850	380	95,5	2,113.23
P-SYH-25000	25000	300	500	11	2850	380	98,7	2,398.13
P-SYH-28000	28000	300	560	7,5	1450	380	98	2,730.09
P-SYH-30000	30000	300	560	11	1450	380	98,8	2,730.09
P-SYH-35000	35000	300	630	11	1450	380	95,1	3,319.44
P-SYH-38000	38000	300	710	11	1450	380	94	4,191.57
P-SYH-45000	45000	300	710	15	1450	380	96,5	5,310.42
P-SYH-50000	50000	300	800	15	1450	380	95	5,449.30



Frequent Blade Cell Aspirators

Model	Flow (m ³ /h)	Pressure (p)	Fan	Motor (kW)	Speed (d/d)	Voltage (V)	Decibel (dBA)	Price €
P-SH-2000	2000	300	9x9	0.75	1450	380	79,9	924.36
P-SH-3000	3000	300	9x9	1,1	1450	380	83,4	965.46
P-SH-4000	4000	300	9x9	1,5	1450	380	84,2	993.21
P-SH-5000	5000	300	10x10	1,5	1450	380	83,9	1,092.04
P-SH-6000	6000	300	10x10	2,2	1450	380	87,7	1,159.25
P-SH-7000	7000	300	10x10	3	1450	380	88,9	1,182.67
P-SH-8000	8000	300	12x12	2,2	1450	380	88,5	1,185.48
P-SH-9000	9000	300	12x12	3	1450	380	90,5	1,209.02
P-SH-10000	10000	300	12x12	4	1450	380	91,5	1,284.19
P-SH-12000	12000	300	15X15	4	1450	380	92,1	1,486.89
P-SH-15000	15000	300	15x15	5,5	1450	380	92,5	1,625.18
P-SH-18000	18000	300	18x18	5,5	1450	380	94,4	1,630.09
P-SH-20000	20000	300	18x18	7,5	1450	380	98,2	1,725.29



Air Handling Unit

Point Air Handling Units are devices that enable fresh air taken from the atmosphere to be sent to the location after conditioning. We have many types of production possibilities according to the demand and the project.

The frame consists of specially designed steel profiles and special corner elements suitable for these profiles. The internal surfaces of the profile minimize pressure losses and do not cause any dirt accumulation since they are designed as closed.

Body panels are made of double-walled, outer surfaces are covered with PVC or galvanized sheet. Heat and sound insulation are provided by rock wool plates or polyurethane material. Body panels can be fixed or used as an intervention door.

In the outer panels, which are used as intervention covers, they are equipped with hinge mechanisms, and the number of hinge and lever mechanisms is provided with a special production double lock, single lever mechanism in order to save space. Specially produced levels save space and also have a great influence on sound insulation thanks to their design.

There is a safety switch that stops the device in case of opening the intervention cover on the devices, and a stop button to stop it in case of emergency.





POINT VENTILATION DEVICES

Medium Pressure Snail Fans



Model	Fan Diameter (Ø)	Speed (rpm)	Motor (kW)	Flow (m³/h)	Pressure (pa)	Price €
P-OBSF-280	280	2850	2500	0.75	500	485.95
P-OBSF-315	315	2850	3500	1.5	500	562.06
P-OBSF-355	355	2850	5000	1.5	500	726.00
P-OBSF-400	400	2850	7500	2.2	500	807.96
P-OBSF-450	450	2850	10000	3.3	500	1,065.57
P-OBSF-500	500	2850	15000	5.5	500	1,323.19
P-OBSF-630	630	1450	20000	5.5	500	1,774.00
P-OBSF-710	710	1450	25000	7.5	500	2,681.50
P-OBSF-800	800	1450	35000	11	500	3,067.92
P-OBSF-900	900	1000	40000	11	500	3,471.90

Roof Type Radial Fan

With External Motor



Model	Flow (m³/h)	Voltage (V)	Fan	Power (kW)	Speed (d/d)	Sound (dBA)	Weight (Kg)	Price €
P-DCF1000	1000	230/380	280	0.25	1400	53	35	351.29
P-DCF1950	1950	230/380	315	0.25	1400	53	42	433.26
P-DCF2900	2900	230/380	355	0.25	1400	55	50	480.09
P-DCF4000	4000	230/380	400	0.37	1400	60	55	597.19
P-DCF5550	5550	230/380	450	0.55	1400	62	62	726.00
P-DCF8300	8300	230/380	500	1.1	1400	64	68	872.37
P-DCF10800	10800	230/380	560	2.2	1400	66	75	1,112.41
P-DCF13000	13000	380	630	3	1400	60	127	1,615.93
P-DCF15000	15000	380	710	4	1400	63	150	2,177.99
P-DCF17000	17000	380	800	7.5	1400	67	216	2,939.11

Duct Type Fans

with External Motor



Model	Flow (m³/h)	Voltage (V)	Fan	Power (kW)	Speed (d/d)	Sound(dBA)	Price €
P-DKF2000	2000	230/380	315	0.25	1400	53	386.42
P-DKF3000	3000	230/380	355	0.25	1400	58	427.40
P-DKF4100	4100	230/380	400	0.37	1400	56	579.63
P-DKF5500	5500	230/380	450	0.55	1400	58	743.56
P-DKF8100	8100	230/380	500	1.1	1400	64	969.56
P-DKF10500	10500	230/380	560	1.2	1400	66	1,065.57

Package Type

Shelter Fan

Model	Voltage (V)	Frequency (Hz)	Current (A)	Power (W)	Speed (d/d)	Condenser (µF)	Flow (m³/h)	Sound dB(A)	Price €
P-SV-225	220/230	50	0,6	135	2600	4	500	70	310.42
P-SV-250	220/230	50	1,05	230	2700	6	800	72	317.68
P-SV-280	220/230	50	1,1	230	2450	6	1000	79	327.28
P-SV-315	220/230	50	1,5	430	1380	10	1500	66	564.64
P-SV-355	220/230	50	1,5	510	1380	10	2000	69	588.76
P-SV-400	220/230	50	3,5	800	1350	16	3000	79	713.82
P-SV-450	380/400	50	2,5	1100	1400		4000	82	914.64
P-SV-500	380/400	50	2,6	1500	1400		5000	80	1,155.39
P-SV-560	380/400	50	3	1650	1400		6000	80	1,335.83

Axial

Jet Fan**55°C** 2 HOURS*

Model	Frequency (Hz)	Voltage (V)	Current (A)	Impulse (N)	Power (W)	Speed (d/d)	Flow (m³/h)	Sound dB(A)	Price €
P-AJF 315	50	400	2-2,3	7/26	0,70-0,85	1400-3000	2500-5000	39-58	875
P-AJF 355	50	400	2,5-3,3	12/46	1-1,3	1400-3000	3500-7000	41-62	1050
P-AJF 400	50	400	3-4,3	19/76	1,3-1,8	1400-3000	5000-10000	44-65	1250

300°C 2 HOURS*

Model	Frequency (Hz)	Voltage (V)	Current (A)	Impulse (N)	Power (W)	Speed (d/d)	Flow (m³/h)	Sound dB(A)	Price €
P-AJF 315	50	400	0,70-2,2	7/26	0,25/1	1400/3000	2500-5000	39-58	950
P-AJF 355	50	400	0,90-2,8	12/46	0,33/1.3	1400/3000	3500-7000	41-62	1100
P-AJF 400	50	400	1,2-4,2	19/76	0,5/2	1400/3000	5000-10000	44-65	1300

400°C 2 HOURS*

Model	Frequency (Hz)	Voltage (V)	Current (A)	Impulse (N)	Power (W)	Speed (d/d)	Flow (m³/h)	Sound dB(A)	Price €
P-AJF 315	50	400	0,70-2,2	7/26	0,25/1	1400/3000	2500-5000	70	1160
P-AJF 355	50	400	0,90-2,8	12/46	0,33/1.3	1400/3000	2500-5000	75	1315
P-AJF 400	50	400	1,2-4,2	19/76	0,5/2	1400/3000	2500-5000	79	1600

Radial

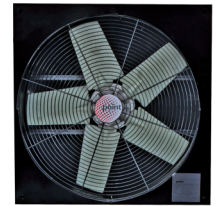
Jet Fan

Model	Frequency (Hz)	Voltage (V)	Impulse (N)	Power (W)	Speed (d/d)	Flow (m³/h)	Sound dB(A)	Price €
P-RJF 500	50	400	12/48	0,3-1,2	700-1400	3000-6000	55-73	1000
P-RJF 560	50	400	18/69	0,55-2,2	700-1400	5000-10000	60-91	1250



POINT VENTILATION DEVICES

Wall Type Axial Fans



Model	Flow (m ³ /h)	Voltage (V)	Power (W)	Speed (d/d)	Sound dB(A)	Price €
P-AF600	10000	230/380	0.75	1450	74	386.42
P-AF700	14000	230/380	1.1	1450	80	526.93
P-AF800	20500	230/380	2.2	1450	86	807.96
P-AF900	33000	380	4	1450	90	1,007.03
P-AF1000	38000	380	5.5	1450	92	1,206.09

Electric Heater



Model	Power (W)	Voltage (V)	Dimensions (cm)	Price €
P-EI 2000	2	230	25x25x25	175.64
P-EI 3000	3	230	25x25x25	193.21
P-EI 4000	4	230	25x25x25	216.63
P-EI 5000	5	380	25x30x30	234.19
P-EI 6000	6	380	25x30x30	257.61
P-EI 7500	7,5	380	25x30x30	281.03
P-EI 9000	9	380	25x30x30	307.38
P-EI 12000	12	380	25x30x30	336.65
P-EI 15000	15	380	25x30x30	363.00

Acrobat Arms



Model	Length (mt)	Diameter Ø	Flow/ (m3/h)	Price €
P-AK 02	2	160	1000-1200	351.29
P-AK 03	3	160	1000-1200	374.71
P-AK 04	4	160	1000-1200	409.84

Mobile Filter



Model	Arm pieces	Voltage V	Flow/ (m3/h)	Price €
P-MF	1	380	1200	1876.54

BVN

VENTILATION DEVICES





BVN VENTILATION DEVICES



Backward Curved Round Duct Fans

Model	Voltage (V)	Frequency (Hz)	Power (W)	Current (A)	Capacitor	Speed r.p.m	Air Flow (m³/h)	Sound dB(A)*	Insulation Class	Protection Class	Weight (Kg)	Price €
BDTX 100	230	50/60	60	0,3	2	2610/2960	240/275	44	B	44	2,6	35.13
BDTX 125	230	50/60	80	0,4	2,5	2325	315	43	B	44	2,7	37.47
BDTX 150	230	50/60	78	0,4	2,5	2450	420	46	B	44	3	42.15
BDTX 160	230	50/60	85	0,4	2,5	2550	440	45	B	44	3,2	42.15
BDTX 200-A	230	50/60	90	0,43	2,5	2300	735	46	B	44	4,4	53.86
BDTX 200-B	230	50/60	100/130	0,51/0,68	4	2530/2720	870/935	48	B	44	4,8	56.21
BDTX 250-A	230	50/60	140	0,69	4	2400	1010	45	B	44	4,9	60.89
BDTX 250-B	230	50/60	145/200	0,74/1,04	6	2650	1150	47	B	44	5,3	63.23
BDTX 315-A	230	50/60	160/210	0,8/1,1	6	2400	1450	48	B	44	6,8	69.09
BDTX 315-B	230	50/60	180/245	0,87/1,23	7	2500/2700	1750/1890	49	B	44	6,9	70.26
BDTX 355-A	230	50/60	160/175	1/0,85	4	1450/1700	1300/1525	45	F	44	9	140.52
BDTX 355-B	230	50	445	1,94	8	2450	2620	54	F	44	10	281.03



Round Duct Fans with Mixed Flow

Model	Voltage (V)	Frequency (Hz)	Power (W)	Current (A)	Capacitor	Speed r.p.m	Air Flow (m³/h)	Sound dB(A)	Insulation Class	Protection Class	Weight (Kg)	Price €
BMFX 100/2V	230	50/60	20 18	0,11 0,10	1	2200 1850	198 165	31 26	B	44	1,8	66,31
BMFX 125/2V	230	50/60	27 23	0,14 0,12	1	2250 1950	284 248	31 26	B	44	2	71,41
BMFX 150/2V	230	50/60	44 35	0,22 0,19	1,2	2550 1950	530 410	33 29	B	44	2,7	106,26
BMFX 200/2V	230	50/60	100 90	0,52 0,48	3	2350 2050	840 690	36 32	B	44	4,8	144,52
BMFX 250/2V	230	50/60	140 110	0,7 0,6	5	2500 2050	1100 990	40 37	F	44	9,4	161,52
BMFX 315/2V	230	50/60	190 145	1,1 0,74	10	2680 2150	2000 1500	45 40	F	44	14	204,03
BMFX 250-P/2V	230	50/60	225 165	1,2 0,75	8	2450 1850	1405 1064	38 34	B	44	7,5	221,03
BMFX 315-P/2V	230	50/60	390 275	1,9 1,4	16	2350 1650	2206 1750	42 38	B	44	11	242,28
BMFX-ST 100/2V	230	50/60	35 20	0,26 0,15	1	2600 2100	177 133	25 23	B	44	3	38,26
BMFX-ST 125/2V	230	50/60	35 20	0,28 0,17	1	2600 2100	218 181	31 26	B	44	3,5	46,76
BMFX-SL 150/2V	230	50/60	50 43	0,25 0,2	1,2	2550 1850	530 410	33 26	B	44	4	161,52
BMFX-SL 200/2V	230	50/60	128 123	0,57 0,52	3	2450 1950	840 690	35 29	B	44	4,8	204,03

*The sound level was measured at a distance of 3m in room condition.

**In our products the engine of which is supplied externally, the hike made to the engine is reflected in the price on the same day.



Backward Curved

Rectangular Duct Fans

Model	Voltage (V)	Frequency (Hz)	Power (W)	Current (A)	Capacitor	Speed r.p.m	Air Flow (m ³ /h)	Sound dB(A)*	Insulation Class	Protection Class	Weight (Kg)	Price €
BDKF 30-15	230	50/60	75/95	0,37/0,47	2,5	2450	450	43	B	44	7	88.99
BDKF 40-20A	230	50/60	100/135	0,49/0,68	4	2650/2870	950/1030	48	B	44	10,5	98.36
BDKF 40-20B	230	50/60	130/180	0,64/0,9	5	2650	1150	54	B	44	11	113.58
BDKF 50-25	230	50/60	180/240	0,82/1,17	6	2600/2750	1610/1700	58	B	44	15	147.54
BDKF 60-30	230	50/60	160	0,9	6	1440/1730	1850/2220	50	F	44	29	210.77
BDKF 60-35A	230	50/60	140/160	0,86/0,82	6	1440/1725	2500/3000	53	F	44	31	222.48
BDKF 60-35B	230	50/60	200/270	1,1/1,4	8	1400/1680	3300/3900	58	F	44	32	234.19
BDKF 70-40A	230	50/60	310/440	1,55/2,2	10	1350/1550	4000/4600	56	F	44	44	374.71
BDKF 70-40B	230	50/60	500/775	2,5/3,7	10	1350/1450	5400/5800	58	F	44	46	421.55
BDKF 80-50M	230	50/60	880/1160	3,83/5,11	16	1250/1150	7000/6440	64	F	44	72	702.58
BDKF 100-50M	230	50	1550	7,3	25	1250	9600	66	F	44	84	786.89
BDKF 80-50	380	50	960/530	2/1,1	-	1335/1050	7550/5950	64	F	44	66	585.48
BDKF 100-50	380	50	1400/900	2,7/1,7	-	1250/950	9600/7300	66	F	44	84	655.74



Backward Curved (External Motor)

Rectangular Duct Fans

Model	Voltage (V)	Frequency (Hz)	Power (W)	Current (A)	Capacitor	Speed r.p.m	Air Flow (m ³ /h)	Sound dB(A)*	Insulation Class	Protection Class	Weight (Kg)	Price € **
BDKF-R 315 M	230	50	0,25	2,1	10	1380	2000	53	F	55	35	281.03
BDKF-R 355 M	230	50	0,25	2,1	10	1380	3000	58	F	55	36	310.30
BDKF-R 400 M	230	50	0,37	3,4	15	1390	4100	56	F	55	49	421.55
BDKF-R 450 M	230	50	0,55	4,5	20	1395	5500	58	F	55	52	538.64
BDKF-R 500 M	230	50	1,1	7,5	35	1410	8100	64	F	55	74	702.58
BDKF-R 560 M	230	50	2,2	14,2	50	1420	10500	66	F	55	91	772.83
BDKF-R 315 T	380	50	0,25	0,87	-	1380	2000	53	F	55	35	281.03
BDKF-R 355 T	380	50	0,25	0,87	-	1380	3000	58	F	55	36	310.30
BDKF-R 400 T	380	50	0,37	1,2	-	1390	4100	56	F	55	49	421.55
BDKF-R 450 T	380	50	0,55	1,6	-	1395	5500	58	F	55	52	538.64
BDKF-R500 T	380	50	1,1	2,6	-	1410	8100	64	F	55	74	702.58
BDKF-R 560 T	380	50	2,2	4,9	-	1420	10500	66	F	55	91	772.83



Backward Curved (Ex-Proof)

Rectangular Duct Fans

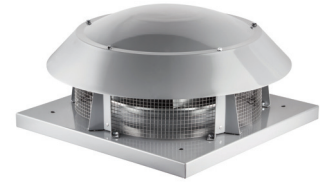
Model	Voltage (V)	Frequency (Hz)	Power (W)	Current (A)	Speed r.p.m	Air Flow (m ³ /h)	Sound dB(A)*	Insulation Class	Protection Class	Weight (Kg)	Price €
BDKF-R-EX 315 T	230	50	0,25	0,87	1380	2000	53	F	55	35	702.58
BDKF-R-EX 355 T	230	50	0,25	0,87	1380	3000	58	F	55	36	726.00
BDKF-R-EX 400 T	230	50	0,37	1,2	1390	4100	56	F	55	49	819.67
BDKF-R-EX 450 T	230	50	0,55	1,6	1395	5500	58	F	55	52	878.22
BDKF-R-EX 500 T	230	50	1,1	2,6	1410	8100	64	F	55	74	1,030.44
BDKF-R-EX 560 T	230	50	2,2	4,9	1420	10500	66	F	55	91	1,323.19



BVN VENTILATION DEVICES

Horizontal Throw

Radial Roof Fans



Model	Voltage (V)	Frequency (Hz)	Power (W)	Current (A)	Capacitor	Speed r.p.m	Air Flow (m³/h)	Sound dB(A)*	Insulation Class	Protection Class	Weigth (Kg)	Price €
BRF 160	230	50/60	60	0,3	2	2600/3000	346/400	44-36	B	44	3,5	62.06
BRF 180	230	50/60	70/90	0,35/0,43	2,5	2500/2750	460/500	49-41	B	44	3,7	67.92
BRF 225	230	50/60	80/100	0,40/0,50	3	2750/3100	902/1020	50-42	B	44	7	78.45
BRF 250	230	50/60	125/175	0,61/0,91	6	2800/3180	1212/1375	52-44	B	44	8	87.82
BRF 315	230	50/60	130/150	0,8	6	1450/1740	2000/2400	47-39	F	44	12,8	140.52
BRF 355	230	50/60	200/245	1,05	6	1400/1680	2900/3500	46-38	F	44	18	187.35
BRF 400	230	50/60	310/460	1,56/2,27	10	1380/1560	4100/4600	51-43	F	44	22	351.29
BRF 450	230	50/60	430/655	2,2/3,2	10	1370/1525	5400/6000	52-44	F	44	28	433.26
BRF 500	380	50	840/580	1,95/1,12	-	1360/1100	7600/6150	54-46	F	44	45,5	562.06
BRF 560	380	50	1440/840	2,8/1,6	-	1300/950	9800/7150	66-58	F	44	48	644.03

Vertical Throw

Radial Roof Fans



Model	Voltage (V)	Frequency (Hz)	Power (W)	Current (A)	Capacitor	Speed r.p.m	Air Flow (m³/h)	Sound dB(A)*	Insulation Class	Protection Class	Weigth (Kg)	Price €
BRF-V 225	230	50/60	160/220	0,71/0,99	6	2650	850	43:35	B	44	7	117.10
BRF-V 315	230	50/60	150/175	0,92/0,85	6	1450/1725	1900/2260	45-37	F	44	22	234.19
BRF-V 355	230	50/60	200/255	1,1/1,25	8	1400/1600	2850/3250	46-38	F	44	34	327.87
BRF-V 400	230	50/60	310/460	1,56/2,27	10	1380/1560	4000/4521	47-39	F	44	39	468.38
BRF-V 450	230	50/60	425/630	2,17/3,15	10	1390/1550	5400/6000	50-42	F	44	51	644.03
BRF-V 500	380	50	960/620	2/1,1	-	1400/1050	7600/5700	52-44	F	44	60	772.83
BRF-V 560	380	50	1515/870	2,9/1,7	-	1250/950	9600/7300	60-52	F	44	99	936.77

Horizontal Throw (Outside Engine Airflow)

Radial Roof Fans



Model	Voltage (V)	Frequency (Hz)	Power (W)	Current (A)	Capacitor	Speed r.p.m	Air Flow (m³/h)	Sound dB(A)*	Insulation Class	Protection Class	Weigth (Kg)	Price €
BRCF 280M	230	50	0,25	2,1	10	1390	1000	53-45	F	55	35	257.61
BRCF 315M	230	50	0,25	2,1	10	1380	1950	53-45	F	55	42	316.16
BRCF 355M	230	50	0,25	2,1	10	1380	2900	55-47	F	55	50	351.29
BRCF 400M	230	50	0,37	3,4	15	1390	4000	60-52	F	55	55	433.26
BRCF 450M	230	50	0,55	4,5	20	1365	5550	62-54	F	55	62	526.93
BRCF 500M	230	50	1,1	7,5	35	1410	8300	64-56	F	55	68	632.32
BRCF 560M	230	50	2,2	14,2	50	1420	10800	66-58	F	55	75	807.96
BRCF 280T	380	50	0,25	0,87	-	1380	1000	53-45	F	55	35	257.61
BRCF 315T	380	50	0,25	0,87	-	1380	1950	53-45	F	55	42	316.16
BRCF 355T	380	50	0,25	0,87	-	1380	2900	55-47	F	55	50	351.29
BRCF 400T	380	50	0,37	1,2	-	1390	4000	60-52	F	55	55	433.26
BRCF 450T	380	50	0,55	1,6	-	1365	5550	62-54	F	55	62	526.93
BRCF 500T	380	50	1,1	2,6	-	1410	8300	64-56	F	55	68	632.32
BRCF 560T	380	50	2,2	4,9	-	1420	10800	66-58	F	55	75	807.96
BRCF 630T	380	50	3	6,6	-	1425	13000	60-52	F	55	127	1,170.96
BRCF 710T	380	50	4	8,4	-	1440	15000	63-55	F	55	150	1,580.80
BRCF 800T	380	50	7,5	15,4	-	1465	17000	67-59	F	55	216	2,131.15

*The sound level was measured at a distance of 4-10 m in open area.

**In our products the engine of which is supplied externally, the hike made to the engine is reflected in the price on the same day.



Vertical Throw (Outside Engine Airflow)

Radial Roof Fans - Ex-proof

Model	Voltage (V)	Frequency (Hz)	Power (W)	Current (A)	Speed r.p.m	Air Flow (m ³ /h)	Sound dB(A)*	Insulation Class	Protection Class	Weight (Kg)	Price € **
BRCF-EX 280T	380	50	0,25	0,87	1380	1000	53-45	F	55	35	679.16
BRCF-EX 315T	380	50	0,25	0,87	1380	1950	53-45	F	55	42	726.00
BRCF-EX 355T	380	50	0,25	0,87	1380	2900	55-47	F	55	50	784.54
BRCF-EX 400T	380	50	0,37	1,2	1390	4000	60-52	F	55	55	843.09
BRCF-EX 450T	380	50	0,55	1,6	1365	5550	62-54	F	55	62	983.61
BRCF-EX 500T	380	50	1,1	2,6	1410	8300	64-56	F	55	68	1,124.12
BRCF-EX 560T	380	50	2,2	4,9	1420	10800	66-58	F	55	75	1,264.64
BRCF-EX 630T	380	50	3	6,6	1425	13000	60-52	F	55	127	1,990.63
BRCF-EX 710T	380	50	4	8,4	1440	15000	63-55	F	55	150	2,224.82
BRCF-EX 800T	380	50	7,5	15,4	1465	17000	67-59	F	55	216	2,810.30



Horizontal Throw (External Motor Circular)

Radial Roof Fans

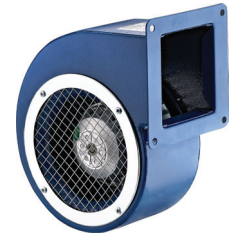
Model	Voltage (V)	Frequency (Hz)	Power (W)	Current (A)	Capacitor	Speed r.p.m	Air Flow (m ³ /h)	Sound dB(A)*	Insulation Class	Protection Class	Weight (Kg)	Price €
BRCF-V 315	230	50/60	185/280	0,82/1,23	5	2730/2980	1800/1965	56-48	F	44	11,3	122,95



Horizontal Throw

Axial Roof Fans

Model	Voltage (V)	Frequency (Hz)	Power (W)	Current (A)	Capacitor	Speed r.p.m	Air Flow (m ³ /h)	Sound dB(A)	Insulation Class	Protection Class	Weight (Kg)	Price € **
BACF 300M	230	50/60	90/110	0,45/0,5	3	1445/1700	1800/2100	47-39	B	44	16	175.64
BACF 350M	230	50/60	250/310	1,22/1,38	66	1400/1550	2600/2880	48-40	B	44	18	204.92
BACF 400M	230	50/60	255/310	1,24/1,39	8	1375/1500	4500	51-43	B	44	20	234.19
BACF 450M	230	50/60	325/390	1,5/1,8	12	1350/1550	6500/7460	55-47	B	44	25	263.47
BACF 500M	230	50/60	375/480	1,75/2,15	-	1350	8500	57-49	B	44	30	322.01
BACF 300T	380	50	210	1,1	-	1445	1800	47-39	B	44	16	175.64
BACF 350T	380	50	270	1,3	-	1400	2600	48-40	B	44	18	204.92
BACF 400T	380	50/60	255/320	0,8/0,76	-	1375/1600	4500	51-43	B	44	20	234.19
BACF 450T	380	50	360	1,6	-	1240	6500	55-47	B	44	25	263.47
BACF 500T	380	50/60	370/450	0,84/0,88	-	1260	8500	57-49	B	44	30	322.01
BACF 560M	230	50	0,75	4,6	-	1405	10400	61-53	F	55	37	449.65
BACF 630M	230	50	1,1	7,1	-	1410	14000	63-55	F	55	45	526.93
BACF 710M	230	50	1,5	9,3	-	1410	18000	68-60	F	55	53	620.61
BACF 800M	230	50	2,2	13,4	-	1425	26000	70-62	F	55	75	784.54
BACF 560T	380	50	0,75	2,1	-	1405	10400	61-53	F	55	37	449.65
BACF 630T	380	50	1,1	2,6	-	1410	14000	63-55	F	55	45	526.93
BACF 710T	380	50	1,5	3,5	-	1410	18000	68-60	F	55	53	620.61
BACF 800T	380	50	2,2	5,0	-	1425	26000	70-62	F	55	75	784.54
BACF 900T	380	50	3	6,6	-	1425	32000	74-66	F	55	80	983.61
BACF 1000T	380	50	5,5	8,4	-	1440	42000	77-69	F	55	105	1,229.51



Forward Curved

Sheet Body Snail Fans

Model	Voltage (V)	Frequency (Hz)	Power (W)	Current (A)	Capacitor	Speed r.p.m	Air Flow (m ³ /h)	Sound dB(A)	Ins. Cl.	Prot. Cs.	Weight (Kg)	Price €
BDRS 125-50	230	50/60	80/100	0,35/0,44	2,5	2450/2600	250/265	42	B	44	2,3	29.27
BDRS 120-60	230	50/60	85/105	0,38/0,46	2,5	2250/2550	275/310	46	B	44	2,5	29.27
BDRS 140-60	230	50/60	138/175	0,61/0,77	4	2300	485	48	B	44	3,2	32.79
BDRS 160-60	230	50/60	200/255	0,88/1,12	6	2250	600	52	B	44	4,3	37.47

*The sound level was measured at a distance of 3m in room condition.



Forward Curved

Aluminum Body Snail Fans

Model	Voltage (V)	Frequency (Hz)	Power (W)	Current (A)	Capacitor	Speed r.p.m	Air Flow (m ³ /h)	Sound dB(A)	Ins. Cl.	Prot. Cs.	Weight (Kg)	Price €
BDRAS 85-40	230	50/60	30	0,13	1	2500	90	40	B	44	1,2	25.76
BDRAS 108-50	230	50/60	40	0,19	1,5	1900	155	42	B	44	1,7	26.93
BDRAS 120-60	230	50/60	85/105	0,38/0,46	2,5	2400	290	45	B	44	2,8	29.27
BDRAS 140-60	230	50/60	138/175	0,61/0,77	4	2300	485	47	B	44	3,4	32.79
BDRAS 160-60	230	50/60	200/255	0,88/1,12	6	2250	600	50	B	44	4,3	37.47

*The sound level was measured at a distance of 3m in room condition.



Forward Curved

Sheet Body Snail Fans

Model	Voltage (V)	Frequency (Hz)	Power (W)	Current (A)	Capacitor	Speed r.p.m	Air Flow (m ³ /h)	Sound dB(A)	Ins. Cl.	Prot. Cs.	Weight (Kg)	Price €
AORB-M	230	50	575	2,7	6	2450	1200	58	B	44	8,7	60.89
AORB-T	380	50/60	415/590	0,78/1	-	2750	1200	58	B	44	8,7	60.89

*The sound level was measured at a distance of 3m in open area.



Plastic Body Snail Fans

Model	Voltage (V)	Frequency (Hz)	Power (W)	Current (A)	Capacitor	Speed r.p.m	Air Flow (m ³ /h)	Sound dB(A)	Ins. Cl.	Prot. Cs.	Weight (Kg)	Price €
BPS 140-60	230	50/60	150/200	0,66/0,87	4	2500	500	48	B	44	2,4	40.98

*The sound level was measured at a distance of 3m in room condition.

Forward Curved

Plastic Body Snail Fans

Model	Voltage (V)	Frequency (Hz)	Power (W)	Current (A)	Capacitor	Speed r.p.m	Air Flow (m ³ /h)	Sound dB(A)	Ins. Cl.	Prot. Cs.	Weight (Kg)	Price €
BPS-B 140-60	230	50/60	110/140	0,49/0,63	4	2570/2900	500/565	48	B	44	2,8	40,98

*The sound level was measured at a distance of 3m in room condition.

Forward Curved

Double Suction Radial Fans

Model	Voltage (V)	Frequency (Hz)	Power (W)	Current (A)	Capacitor	Speed r.p.m	Air Flow (m ³ /h)	Sound dB(A)	Ins. Cl.	Prot. Cs.	Weight (Kg)	Price €
ÇES	230	50	217	1,1	8	1420	1300	46	B	44	9	67,33

*The sound level was measured at a distance of 3m in open area.

Forward Curved

Single Suction Radial Fans

Model	Voltage (V)	Frequency (Hz)	Power (W)	Current (A)	Capacitor	Speed r.p.m	Air Flow (m ³ /h)	Sound dB(A)	Ins. Cl.	Prot. Cs.	Weight (Kg)	Price €
OÇES	230	50	400	1,8	10	1250	2200	45	B	44	10,3	70,26

*The sound level was measured at a distance of 3m in open area.

Forward Curved

Single Suction Radial Fans

Model	Voltage (V)	Frequency (Hz)	Power (W)	Current (A)	Capacitor	Speed r.p.m	Air Flow (m ³ /h)	Sound dB(A)	Ins. Cl.	Prot. Cs.	Weight (Kg)	Price €
OBR 140M-2K	230	50/60	200/285	1,1/1,25	8	2930/3460	1100/1300	53	B	44	7,7	55,62
OBR 140M-4K	230	50/60	175	1,05/0,83	8	1480/1720	550/640	45	B	44	7,7	55,62

*The sound level was measured at a distance of 3m in open area.



BVN VENTILATION DEVICES

Forward Curved

Single Suction Radial Fans



Model	Voltage (V)	Frequency (Hz)	Power (W)	Current (A)	Capacitor	Speed r.p.m	Air Flow (m³/h)	Sound dB(A)	Ins. Cl.	Prot. Cs.	Weight (Kg)	Price €
OBR 200M-2K	230	50	450	2	8	2770	1800	55	B	44	9	58.55
OBR 200M-4K	230	50	190	1,1	8	1450	850	50	B	44	8,4	58.55
OBR 200M-2K *	230	50	260	1,5	8	2900	1700	55	B	44	9,3	67.92
OBR 200T-2K	380	50	140	0,7	-	2950	1800	60	B	44	8,3	58.55
OBR 200T-4K	380	50	190	0,9	-	1465	850	55	B	44	8,4	58.55

*Rare blade fan

Forward Curved

Single Suction Radial Fans



Model	Voltage (V)	Frequency (Hz)	Power (W)	Current (A)	Capacitor	Speed r.p.m	Air Flow (m³/h)	Sound dB(A) *	Ins. Cl.	Prot. Cs.	Weight (Kg)	Price € **
OBR 260M-2K	230	50	1,5	9,8	40	2820	2700	72	F	55	9,5	204.92
OBR 260M-4K	230	50	0,25	2,1	10	1380	1450	66	F	55	12,8	84.89
OBR 260T-2K	380	50	1,5	3,3	-	2820	2700	72	F	55	11,2	204.92
OBR 260T-4K	380	50	0,25	0,81	-	1380	1450	66	F	55	9,8	84.89

Forward Curved

Aluminum Body Radial Fans



Model	Voltage (V)	Frequency (Hz)	Power (W)	Current (A)	Capacitor	Speed r.p.m	Air Flow (m³/h)	Sound dB(A) *	Ins. Cl.	Prot. Cs.	Weight (Kg)	Price € **
BDS 1M (140-70)	230	50	0,25	1,6	10	2870	800	50	F	55	9	155.74
BDS 2M (160-90)	230	50	0,37	2,5	15	2885	1700	55	F	55	11	166.28
BDS 3M (180-90)	230	50	0,55	3,5	20	2865	2100	60	F	55	13	194.38
BDS 4M (225-90)	230	50	0,75	5	30	2770	2600	65	F	55	18	250.59
BDS 4M (225-102)	230	50	1,1	7	35	2770	3200	68	F	55	19	257.61
BDS 5M (250-112)	230	50	1,5	9,8	40	2820	3700	70	F	55	25	322.01
BDS 6M (268-112)	230	50	2,2	13,5	50	2800	4650	71	F	55	31	398.13
BDS 1T (140-70)	380	50	0,25	0,67	-	2840	800	50	F	55	9	155.74
BDS 2T (160-90)	380	50	0,37	1,05	-	2800	1700	55	F	55	11	166.28
BDS 3T (180-90)	380	50	0,55	1,27	-	2780	2100	60	F	55	13	194.38
BDS 4T (225-90)	380	50	0,75	1,75	-	2760	2600	65	F	55	18	250.59
BDS 4T (225-102)	380	50	1,1	2,3	-	2770	3200	68	F	55	19	257.61
BDS 5T (250-112)	380	50	1,5	3,3	-	2820	3700	70	F	55	25	322.01
BDS 6T (268-112)	380	50	2,2	4,5	-	2800	4650	71	F	55	31	398.13
BDS 7T (300-112)	380	50	4	7,9	-	2880	6200	72	F	55	43	526.93
BDS 8T (315-112)	380	50	5,5	10,3	-	2900	8400	73	F	55	48	702.58

*The sound level was measured at a distance of 3m in open area.

**In our products the engine of which is supplied externally, the hike made to the engine is reflected in the price on the same day.

Forward Curved (Low Pressure)

Double Suction Radial Fans

Model	Air Flow (m ³ /h)	Weight (Kg)	Price €
BRV 7/7	3500	6.1	87.82
BRV 9/9	5000	8.2	105.39
BRV 10/10	6500	9.4	146.37
BRV 12/12	10000	15.5	166.86
BRV 15/15	16000	20.7	210.77
BRV 18/18	22000	40.5	263.47
BRV-K 15/15	18000	20.7	292.74
BRV-K 18/18	25000	40.5	351.29



Self-Motorized

Double Suction Centrifugal Fans

Model	Voltage (V)	Frequency (Hz)	Power (W)	Current (A)	Capacitor	Speed r.p.m	Air Flow (m ³ /h)	Sound dB(A) *	Ins. Cl.	Prot. Cs.	Weight (Kg)	Price €
BRV-D 7-7	230	50	0,15	1,7	10	1300	1500	60	F	20	9	175.64
BRV-D 9-9	230	50	0,37	5,1	20	1300	2625	62	F	20	13	234.19
BRV-D 10-10	230	50	0,55	5,7	20	1300	3200	66	F	20	15	292.74
BRV-D 12-12	230	50	0,75	5,8	20	900	4000	62	F	20	26	351.29



Backward Curved

Double Suction Radial Fans

Model	Air Flow (m ³ /h)	Weight (Kg)	Price €
BSF 280	6000	22	234.19
BSF 315	8000	33	292.74
BSF 355	10000	45	292.74
BSF 400	15000	52	339.58
BSF 450	18000	68	503.51
BSF 500	26000	85	562.06
BSF 560	32000	140	796.25
BSF 630	40000	170	1,135.83





Low Pressure Snail Fans

Model	Voltage (V)	Frequency (Hz)	Power (W)	Current (A)	Capacitor	Speed r.p.m	Air Flow (m³/h)	Sound dB(A)	Ins. Cl.	Prot. Cs.	Price €
ALR-1M	230	50	0,18	1,7	10	1380	1500	36-28	F	55	272.25
ALR-2M	230	50	0,25	2,1	10	1380	2300	37-29	F	55	351.29
ALR-3M	230	50	0,25	2,1	10	1380	3200	41-33	F	55	409.84
ALR-4M	230	50	0,37	3,4	15	1390	5000	42-34	F	55	468.38
ALR-5M	230	50	0,55	4,5	20	1365	6000	45-37	F	55	541.57
ALR-7M	230	50	1,1	7,5	35	1410	8000	49-42	F	55	658.67
ALR-8M	230	50	2,2	14,2	50	1420	10000	52-44	F	55	878.22
ALR-1T	380	50	0,18	0,65	-	1380	1500	36-28	F	55	272.25
ALR-2T	380	50	0,25	0,87	-	1380	2300	37-29	F	55	351.29
ALR-3T	380	50	0,25	0,87	-	1380	3200	41-33	F	55	409.84
ALR-4T	380	50	0,37	1,2	-	1390	5000	42-34	F	55	468.38
ALR-5T	380	50	0,55	1,6	-	1365	6000	45-37	F	55	541.57
ALR-7T	380	50	1,1	2,6	-	1410	8000	49-42	F	55	658.67
ALR-8T	380	50	2,2	4,9	-	1420	10000	52-44	F	55	878.22

*The sound level was measured at a distance of 4-10 m in open area.

*In our products the engine of which is supplied externally, the hike made to the engine is reflected in the price on the same day.

Medium Pressure Snail Fans

Model	Voltage (V)	Frequency (Hz)	Power (W)	Current (A)	Capacitor	Speed r.p.m	Air Flow (m³/h)	Sound dB(A)	Ins. Cl.	Prot. Cs.	Weight (Kg)	Price €
ORB 1M	230	50	0,37	2,5	15	2800	950	56	F	55	30	272.25
ORB 2M	230	50	0,75	5	30	2760	1000	59	F	55	35	351.29
ORB 3M	230	50	1,1	7	35	2770	1300	60	F	55	37	409.84
ORB 4M	230	50	1,5	9,8	40	2820	1600	62	F	55	53	468.38
ORB 5M	230	50	2,2	13,5	50	2800	1900	64	F	55	70	541.57
ORB 6M	230	50	3	17,7	60	2850	2200	65	F	55	86	614.75
ORB 1T	380	50	0,37	1,05	-	2800	950	56	F	55	30	272.25
ORB 2T	380	50	0,75	1,75	-	2760	1000	59	F	55	35	351.29
ORB 3T	380	50	1,1	2,3	-	2770	1300	60	F	55	37	409.84
ORB 4T	380	50	1,5	3,3	-	2820	1600	62	F	55	53	468.38
ORB 5T	380	50	2,2	4,5	-	2800	1900	64	F	55	70	541.57
ORB 6T	380	50	3	5,8	-	2850	2200	65	F	55	86	614.75
ORB 7T	380	50	4	7,9	-	2880	2500	69	F	55	96	658.67
ORB 8T	380	50	5,5	10,3	-	2900	3000	72	F	55	108	878.22
ORB 9T	380	50	7,5	13,6	-	2910	4000	74	F	55	125	1,065.57



*The sound level was measured at a distance of 3m in open area.

*In our products the engine of which is supplied externally, the hike made to the engine is reflected in the price on the same day.



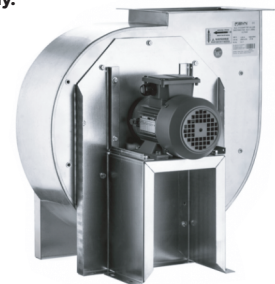
Rare Blade

Low Pressure Snail Fans

Model	Voltage (V)	Freq. (Hz)	Power (W)	Current (A)	Capacitor	Speed r.p.m	Air Flow (m ³ /h)	Sound dB(A)	Ins. Cl.	Prot. Cs.	Weight (Kg)	Price €
BGSS 1M	230	50	0,25	2,1	10	1380	2500	70	F	55	67	351.29
BGSS 2M	230	50	0,55	3,3	20	1365	3500	72	F	55	78	409.84
BGSS 3M	230	50	0,75	5,4	30	1410	5000	75	F	55	91	526.93
BGSS 4M	230	50	1,5	9,8	50	1400	7000	85	F	55	104	585.48
BGSS 5M	230	50	2,2	14	60	1425	10000	88	F	55	145	772.83
BGSS 6M	230	50	3	20	60	1430	12000	92	F	55	158	913.35
BGSS 1T	380	50	0,25	0,87	-	1380	2500	70	F	55	67	351.29
BGSS 2T	380	50	0,55	1,6	-	1365	3500	72	F	55	78	409.84
BGSS 3T	380	50	0,75	1,92	-	1410	5000	75	F	55	91	526.93
BGSS 4T	380	50	1,5	3,5	-	1400	7000	85	F	55	104	585.48
BGSS 5T	380	50	2,2	4,9	-	1420	10000	88	F	55	145	772.83
BGSS 6T	380	50	3	6,7	-	1430	12000	92	F	55	158	913.35
BGSS 7T	380	50	4	8,4	-	1440	15000	95	F	55	175	960.19
BGSS 8T	380	50	5,5	11,5	-	1450	18000	98	F	55	225	1,217.80
BGSS 9T	380	50	7,5	16	-	1455	20000	100	F	55	240	1,288.06
BGSS 10T	380	50	11	21,3	-	1465	23000	102	F	55	255	1,639.34
BGSS 11T	380	50	15	29,4	-	1470	25000	103	F	55	325	1,943.79
BGSS 12T	380	50	18,5	34,5	-	1470	30000	105	F	55	375	2,224.82
BGSS 13T	380	50	22	43	-	1475	40000	105	F	55	410	2,517.56

*The sound level was measured at a distance of 3m in open area.

*In our products the engine of which is supplied externally, the hike made to the engine is reflected in the price on the same day.



Low Pressure Snail Fans

Model	Voltage (V)	Freq. (Hz)	Power (W)	Current (A)	Capacitor	Speed r.p.m	Air Flow (m ³ /h)	Sound dB(A)	Ins. Cl.	Prot. Cs.	Weight (Kg)	Price €
ALÇ 315M	230	50	0,25	2,1	10	1380	1800	37-29	F	55	41	193.21
ALÇ 355M	230	50	0,25	2,1	10	1380	2800	41-33	F	55	53	322.01
ALÇ 400M	230	50	0,37	3,4	15	1390	4000	42-34	F	55	64	380.56
ALÇ 450M	230	50	0,55	4,5	20	1365	5300	45-37	F	55	70	421.55
ALÇ 500M	230	50	1,1	7,5	35	1410	8000	49-42	F	55	90	585.48
ALÇ 560M	230	50	2,2	14,2	50	1420	10000	52-44	F	55	103	702.58
ALÇ 315T	380	50	0,25	0,87	-	1380	1800	37-29	F	55	41	193.21
ALÇ 355T	380	50	0,25	0,87	-	1380	2800	41-33	F	55	53	322.01
ALÇ 400T	380	50	0,37	1,2	-	1390	4000	42-34	F	55	64	380.56
ALÇ 450T	380	50	0,55	1,6	-	1365	5300	45-37	F	55	70	421.55
ALÇ 500T	380	50	1,1	2,6	-	1410	8000	49-42	F	55	90	585.48
ALÇ 560T	380	50	2,2	4,9	-	1420	10000	52-44	F	55	103	702.58

*The sound level was measured at a distance of 4-10 m in open area.

*In our products the engine of which is supplied externally, the hike made to the engine is reflected in the price on the same day.



Axial Chimney Aspirator

Model	Voltage (V)	Freq. (Hz)	Power (W)	Current (A)	Capacitor	Speed r.p.m	Air Flow (m ³ /h)	Sound dB(A)	Ins. Cl.	Prot. Cs.	Price €
BB 160	230	50/60	25	0,15	1450	450	40	B	44	1,5	21.66
BB 200	230	50/60	28	0,15	1250	780	42	B	44	1,7	24.59
BB 250	230	50/60	48	0,33	1450	890	46	B	44	2,5	32.20
BB 300	230	50/60	50	0,33	1350	1150	50	B	44	2,8	36.30

*The sound level was measured at a distance of 3m in open area.



Capped

Axial Chimney Aspirator

Model	Voltage (V)	Freq. (Hz)	Power (W)	Current (A)	Capacitor	Speed r.p.m	Air Flow (m ³ /h)	Sound dB(A)	Ins. Cl.	Prot. Cs.	Price €
BK 160	230	50/60	25	0,15	1450	450	40	B	44	1,8	2459
BK 200	230	50/60	28	0,15	1250	780	42	B	44	2,1	26.93
BK 250	230	50/60	48	0,33	1450	890	46	B	44	3,1	35.13
BK 300	230	50/60	50	0,33	1350	1150	50	B	44	2,8	40.96

*The sound level was measured at a distance of 3m in open area.



Axial Fans

Model	Voltage (V)	Freq. (Hz)	Power (W)	Current (A)	Capacitor	Speed r.p.m	Air Flow (m ³ /h)	Sound dB(A)	Ins. Cl.	Prot. Cs.	Weight (Kg)	Price €
BDRAX 200-2K	230	50/60	63	0,28	2	2750/3200	680/790	50	B	44	2	32.20
BDRAX 200-4K	230	50/60	55	0,26	2	1450/1750	407/490	40	B	44	2,2	35.13
BDRAX 250-2K	230	50/60	100	0,5	4	2700/3100	1500/1700	55	B	44	2,7	35.13
BDRAX 250-4K	230	50/60	55	0,28	1,5	1400/1680	760/910	41	B	44	2,7	38.64
BDRAX 300-2K	230	50/60	140/190	0,6/0,85	5	2600/2800	2020/2175	57	B	44	3,5	40.98
BDRAX 300-4K	230	50/60	65	0,29	2	1360/1550	1410/1600	47	B	44	3,5	43.91
BDRAX 350-2K	230	50/60	200	0,9	5	2050	3110	62	B	44	4,6	49.77
BDRAX 350-4K	230	50/60	75/100	0,32/0,45	3	1330/1500	2340/2640	52	B	44	4,6	52.69

*The sound level was measured at a distance of 3m in open area.



Squae

Industry Aspirators

Model	Voltage (V)	Freq. (Hz)	Power (W)	Current (A)	Capacitor	Speed r.p.m	Air Flow (m ³ /h)	Sound dB(A)	Ins. Cl.	Prot. Cs.	Weight (Kg)	Price €
BSMS 250-2K	230	50/60	150/190	1,0,85	8	2900/3250	2200/2465	61	B	44	6,3	55.62
BSMS 250	230	50/60	65/75	0,4/0,3	3	1475/1770	1200	45	B	44	6	49.77
BSMS 300	230	50/60	90/110	0,45/0,50	3	1445/1700	2000	48	B	44	7	55.62
BSMS 350	230	50/60	160	1,05/0,85	6	1460/1750	3250/3895	53	B	44	8,2	58.55
BSMS 400	230	50/60	185	1,17/0,95	6	1425/1725	4500/5445	56	B	44	9	61.48
BSMS 450	230	50/60	200/190	1,1/0,9	6	1430/1730	5000/6050	60	B	44	9,6	67.33
BSMS 500	230	50/60	230	1,1	8	1440/1700	5500/6495	62	B	44	11	73.19
BSMS 550	230	50/60	220/320	1,07/1,64	10	1440/1700	6000/7080	63	B	44	15,3	93.68
BSMS 600	230	50/60	235/340	1,15/1,65	10	1400/1670	8000/9540	65	B	44	15,6	93.68
BSTS 250-2K	380	50/60	110/140	0,87/1,05	-	2900/3250	2200/2465	61	B	44	6,3	55.62
BSTS 250	380	50/60	50/60	0,25/0,35	-	1475/1770	1200	45	B	44	6	49.77
BSTS 300	380	50/60	70/85	0,30/0,36	-	1445/1700	2000	48	B	44	7	55.62
BSTS 350	380	50/60	120	0,45/0,55	-	1460/1750	3250/3895	53	B	44	8,2	58.55
BSTS 400	380	50/60	150	0,75/0,9	-	1425/1725	4500/5445	56	B	44	9	61.48
BSTS 450	380	50/60	170/200	1,1/0,9	-	1430/1730	5000/6050	60	B	44	9,6	67.33
BSTS 500	380	50/60	200	1,1	-	1440/1700	5500/6495	62	B	44	11	73.19
BSTS 550	380	50/60	220/320	1,07/1,64	-	1440/1700	6000/7080	63	B	44	15,3	93.68
BSTS 600	380	50/60	235/340	1,15/1,65	-	1400/1670	8000/9540	65	B	44	15,6	93.68

*The sound level was measured at a distance of 3m in open area.



Industry Aspirators

Model	Voltage (V)	Freq. (Hz)	Power (W)	Current (A)	Capacitor	Speed r.p.m	Air Flow (m ³ /h)	Sound dB(A)	Ins. Cl.	Prot. Cs.	Weight (Kg)	Price €
BSM 250-2K	230	50/60	150/190	1,0,85	8	2900/3250	2200/2465	61	B	44	7,4	49.77
BSM 250	230	50/60	65/75	0,4/0,3	3	1475/1770	1200	45	B	44	7,4	43.91
BSM 300	230	50/60	90/110	0,45/0,50	3	1445/1700	2000	48	B	44	8	49.77
BSM 350	230	50/60	160	1,05/0,85	6	1460/1750	3250/3895	53	B	44	8,2	52.69
BSM 400	230	50/60	185	1,17/0,95	6	1425/1725	4500/5445	56	B	44	8,8	55.62
BSM 450	230	50/60	200/190	1,1/0,9	6	1430/1730	5000/6050	60	B	44	10	58.55
BSM 500	230	50/60	230	1,1	8	1440/1700	5500/6495	62	B	44	11	67.33
BSM 550	230	50/60	220/320	1,07/1,64	10	1440/1700	6000/7080	63	B	44	14,6	81.97
BSM 600	230	50/60	235/340	1,15/1,65	10	1400/1670	8000/9540	65	B	44	15,6	81.97
BST 250-2K	380	50/60	110/140	0,87/1,05	-	2900/3250	2200/2465	61	B	44	7,4	49.77
BST 250	380	50/60	50/60	0,25/0,35	-	1475/1770	1200	45	B	44	7,4	43.91
BST 300	380	50/60	70/85	0,30/0,36	-	1445/1700	2000	48	B	44	8	49.77
BST 350	380	50/60	120	0,45/0,55	-	1460/1750	3250/3895	53	B	44	8,2	52.69
BST 400	380	50/60	150	0,75/0,9	-	1425/1725	4500/5445	56	B	44	8,8	55.62
BST 450	380	50/60	170/200	1,1/0,9	-	1430/1730	5000/6050	60	B	44	10	58.55
BST 500	380	50/60	200	1,1	-	1440/1700	5500/6495	62	B	44	11	67.33
BST 550	380	50/60	220/320	1,07/1,64	-	1440/1700	6000/7080	63	B	44	14,6	81.97
BST 600	380	50/60	235/340	1,15/1,65	-	1400/1670	8000/9540	65	B	44	15,6	81.97

*The sound level was measured at a distance of 3m in open area.



Square Case

Industrial Aspirators with Plastic Propeller

Model	Voltage (V)	Freq. (Hz)	Power (W)	Current (A)	Capacitor	Speed r.p.m	Air Flow (m ³ /h)	Sound dB(A)	Ins. Cl.	Prot. Cs.	Weight (Kg)	Price €
B6 PAM 250	230	50/60	70/80	0,4/0,35	3	1450/1750	1500/1810	54	B	44	7,3	49.77
B6 PAM 300	230	50/60	85/110	0,45/0,48	3	1450/1700	2390/2800	57	B	44	8,5	55.62
B6 PAM 350	230	50/60	250/310	1,22/1,38	6	1400/1550	4080/4520	60	B	44	9,9	58.55
B6 PAM 400	230	50/60	255/310	1,24/1,39	6	1375/1500	5200/5670	63	B	44	10,4	64.40
B6 PAM 450	230	50/60	360/432	1,6/1,92	8	1250/1500	6100/7320	61	B	44	11,4	67.33
B6 PAM 500	230	50/60	440/530	2/2,4	8	1250/1500	7200/8640	66	B	44	13,6	73.19
B6 PAT 250	380	50/60	120/100	0,75/0,61	-	1450/1745	1500/1800	54	B	44	7,3	49.77
B6 PAT 300	380	50/60	150/180	0,65	-	1450/1700	2390/2800	57	B	44	8,5	55.62
B6 PAT 350	380	50/60	190/230	0,80/0,70	-	1400/1550	4080/4520	60	B	44	9,9	58.55
B6 PAT 400	380	50/60	255/320	0,8/0,76	-	1375/1600	5200/6050	63	B	44	10,4	64.40
B6 PAT 450	380	50/60	290/350	0,82/0,78	-	1250/1500	6100/7320	61	B	44	11,4	67.33
B6 PAT 500	380	50/60	370/450	0,84/0,88	-	1375	7200	66	B	44	13,6	73.19

*The sound level was measured at a distance of 3m in open area.



Square Case

Industrial Aspirators with Plastic Propeller

Model	Voltage (V)	Freq. (Hz)	Power (W)	Current (A)	Capacitor	Speed r.p.m	Air Flow (m ³ /h)	Sound dB(A)	Ins. Cl.	Prot. Cs.	Weight (Kg)	Price €
B5PAM 500	230	50	0,55	3,3	20	1365	8500	68	F	55	16,6	249.41
B5PAM 600	230	50	0,75	4,6	30	1405	10500	70	F	55	20,5	278.69
B5PAM 700	230	50	1,1	7,1	35	1410	14000	75	F	55	33	380.56
B5PAM 800	230	50	2,2	13,4	60	1425	20000	80	F	55	52	585.48
B5PAT 500	380	50	0,55	1,6	-	1365	8500	68	F	55	16,6	234.19
B5PAT 600	380	50	0,75	2,1	-	1405	10500	70	F	55	20,5	263.47
B5PAT 700	380	50	1,1	2,6	-	1410	14000	75	F	55	33	351.29
B5 PAT 800	380	50	2,2	5,0	-	1425	20000	80	F	55	52	556.21
B5PAT 900	380	50	4	8,4	-	1440	32000	82	F	55	61	731.85
B5PAT 1000	380	50	5,5	11,2	-	1465	37000	85	F	55	90	878.22

*The sound level was measured at a distance of 3m in open area.

**In our products the engine of which is supplied externally, the hike made to the engine is reflected in the price on the same day.



Axial Cooling Fans

Model	Voltage (V)	Freq. (Hz)	Power (W)	Current (A)	Capacitor	Speed r.p.m	Air Flow (m ³ /h)	Sound dB(A)	Ins. Cl.	Prot. Cs.	Weight (Kg)	Price €
SF-4M 250 B	230	50/60	50/60	0,22/0,26	2	1400/1670	1000/1190	44	F	54	2,5	36.30
SF-4M 300 B	230	50/60	72/87	0,32/0,38	2,5	1300/1450	1700/1900	50	F	54	4	39.81
SFX-4M 300 B	230	50/60	100/120	0,5/0,54	3,5	1450/1710	1900/2240	50	F	54	4	46.84
SF-4M 350 B	230	50/60	165/195	0,75/0,85	4	1380/1545	3300/3700	55	F	54	4,7	49.88
SF-4M 400 B	230	50/60	160/220	0,75/1,1	5	1400/1650	4000/4700	58	F	54	6,1	57.38
SF-4M 450 B	230	50/60	245/355	1,2/1,6	8	1400/1600	5700/6500	63	F	54	6,9	70.26
SFX-4M 450 B	230	50/60	165/220	0,75/0,95	4	910/1025	4575/5225	55	F	54	6,9	70.26
SF-4M 500 B	230	50/60	450/600	1,98/2,65	10	1300/1450	6900/7700	65	F	55	9,5	111.24
SFX-4M 500 B	230	50	750	3,28	16	1260	9250	66	F	55	10,5	140.52
SFX-6M 500 B	230	50/60	220/275	0,99/1,2	6,3	850	6240	58	F	55	10,5	140.52
SFX-4M 560 B	230	50	1100	4,75	20	1280	11500	68	F	55	15	175.64
SFX-6M 560 B	230	50	450	2	10	875	8000	62	F	55	15	175.64
SFX-6M 630 B	230	50	800	3,45	16	850	12000	65	F	55	18	199.06

*The sound level was measured at a distance of 3m in room condition.



Plastic - Standard Radial Bath

WC Aspirator

Model	Voltage (V)	Freq. (Hz)	Power (W)	Current (A)	Speed r.p.m	Air Flow (m³/h)	Sound dB(A)	Weigth (Kg)	Price €
BPR 1012	230	50/60	22	0,9	1050	120	28	1,9	28,85
BPR 1015	230	50/60	28	0,12	1550	150	32	2,1	32,24

Plastic Bathroom - WC Aspirator

WC Aspirator

Model	Voltage (V)	Freq. (Hz)	Power (W)	Current (A)	Speed r.p.m	Air Flow (m³/h)	Sound dB(A)	Weigth (Kg)	Price €
EF 1009	230	50/60	13	0,09	2600	100	40	0,5	7,03
EF 1219	230	50/60	14	0,09	2400	200	41	0,55	7,61
EF 1530	230	50/60	21	0,13	2000	300	43	0,71	9,84

*The sound level was measured at a distance of 3m in room condition.

Plastic - Automatic Shutter Bathroom

WC Aspirator

Model	Voltage (V)	Freq. (Hz)	Power (W)	Current (A)	Speed r.p.m	Air Flow (m³/h)	Sound dB(A)	Weigth (Kg)	Price €
EC 1010E	230	50/60	15	0,09	- 2600	100	40	0,6	18,15
EC 1219E	230	50/60	16	0,09	- 2400	200	41	0,65	19,91
EC 1530E	230	50/60	23	0,14	- 2000	300	43	0,84	22,25

*The sound level was measured at a distance of 3m in room condition.

Bidirectional Plastic Aspirator

Model	Voltage (V)	Freq. (Hz)	Power (W)	Current (A)	Speed r.p.m	Air Flow (m³/h)	Sound dB(A)	Weigth (Kg)	Price €
BPP 15	230	50/60	25	0,10	- 1350/1620	300/360	40	1,8	36,48
BPP 20	230	50/60	30	0,12	- 1250/1450	500/580	41	2,6	40,72
BPP 25	230	50/60	35	0,15	- 1250/1375	735/810	43	2,8	42,42
BPP 30	230	50/60	40	0,19	- 1100	1100	44	3,2	46,66

*The sound level was measured at a distance of 3m in room condition.



Speed Switch with Frequency Inverter



Model	Power (kW)	Voltage (V)		Price €
		Input	Output	
BSC-F-10	0,75	230	380	190
BSC-F-15	1,5	230	380	220
BSC-F-22	2,2	230	380	310
BSC-F-30	3	380	380	450
BSC-F-40	4	380	380	475
BSC-F-55	5,5	380	380	560
BSC-F-75	7,5	380	380	735
BSC-F-110	11	380	380	820
BSC-F-150	15	380	380	1.130
BSC-F-180	18,5	380	380	1.340
BSC-F-220	22	380	380	1.500
BSC-F-300	30	380	380	2.000

Speed Controller



Model	Voltage (V)	Current (A)	Piece of Box	Price €
BSC-1	230	2	20	26,35
BSC-2	230	5	20	29,27
BSC-3	230	10	20	43,91
BSC-DS	230	5	10	11,12

Oil Baffle Filter



Type	Sizes					Price €
	A	B	C	D	E	
BYF 200	135	195	270	335	20	15,22
BYF 250	145	245	270	335	20	19,32
BYF 315	175	290	280	345	20	21,08

Metallic Cassette Filter



Type	Sizes		Filter Surface m ²	Air Flow m ³ /h	Pressure P	Price €
	A	B				
BFG2-1	278	287	0.14	1040	60	16,86
BFG2-2	287	592	0.29	2120	60	29,27
BFG2-3	592	592	0.60	4360	60	44,50

Activated Carbon Cassette Filter



Type	Sizes		Filter Surface m ²	Air Flow m ³ /h	Pressure P	Price
	A	B				
BFG3-1	287	287	0.18	710	65	14,64
BFG3-2	287	592	0.37	1500	65	18,15
BFG3-3	592	592	0.75	300	65	32,79

G4 Cassette Filter



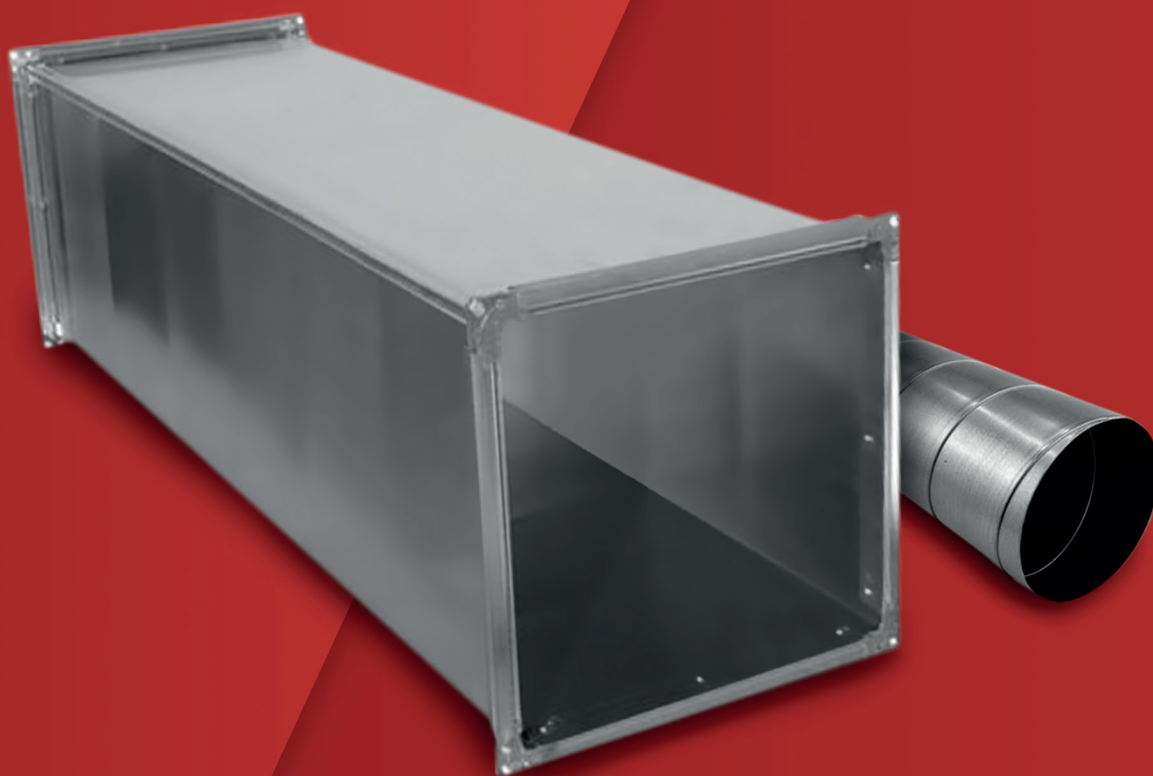
Type	Sizes		Filter Surface m ²	Air Flow m ³ /h	Pressure P	Price €
	A	B				
BFG4-1	287	287	0.14	761	80	7.03
BFG4-2	287	592	0.29	1570	80	10.19
BFG4-3	592	592	0.60	3240	80	14.64
BFG4-4	180	287	0.09	478	80	7.03
BFG4-5	180	400	0.13	666	80	8.43
BFG4-6	264	365	0.17	890	80	10.19
BFG4-7	314	505	0.27	1466	80	11.71
BFG4-8	365	650	0.32	1704	80	14.05
BFG4-9	382	592	0.39	2090	80	10.54
BFG4-10	425	650	0.47	2555	80	14.64
BFG4-11	465	650	0.52	2800	80	14.64
BFG4-12	565	650	0.63	3400	80	15.22

High Flow H13 Hepa Filter



Type	Sizes		Air Flow m ³ /h	Pressure P	Price €
	A	B			
BFH13-1	305	305	1000	250	134,66
BFH13-2	305	610	2000	250	234,19
BFH13-3	610	610	4000	250	421,55

AIR
DUCTS





**Prismatic
Air Ducts**



[Get a Price](#)

**Cylindrical (Spiro)
Air Ducts**



[Get a Price](#)

**Dkp Sheet
Air Ducts**



[Get a Price](#)

ELASTOMERIC RUBBER

RUBBER INSULATION



Insulation Plates



Roll Width	Thickness	m ² / Roll	€ / m ²	€ / Roll
1m	6 mm	30	1.28	38,47
1m	9 mm	20	1.52	30,33
1m	10 mm	20	1.63	32,67
1m	13 mm	14	1.92	26,89
1m	19 mm	10	2.93	29,27
1m	25 mm	8	3.86	30,91
1m	32 mm	6	5.02	30,14
1m	40 mm	4	8.36	33,44
1m	50 mm	4	9.98	39,91

Roll Width	Thickness	m ² / Roll	€ / m ²	€ / Roll
1,2 m	6 mm	36	1.28	46,16
1,2 m	9 mm	24	1.52	36,39
1,2 m	10 mm	24	1.63	39,20
1,2 m	13 mm	16,8	1.92	32,26
1,2 m	19 mm	12	2.93	35,13
1,2 m	25 mm	9,6	3.86	37,10
1,2 m	32 mm	7,2	5.02	35,13
1,2 m	40 mm	4,8	8.36	40,13
1,2 m	50 mm	4,8	9.98	47,89

Roll Width	Thickness	m ² / Roll	€ / m ²	€ / Roll
1,5 m	6 mm	45	1.28	57,70
1,5 m	9 mm	30	1.52	45,49
1,5 m	10 mm	30	1.63	49,00
1,5 m	13 mm	21	1.92	40,33
1,5 m	19 mm	15	2.93	43,91
1,5 m	25 mm	12	3.86	46,37
1,5 m	32 mm	9	5.02	45,21
1,5 m	40 mm	6	8.36	50,16
1,5 m	50 mm	6	9.98	59,86



Self-Adhesive Insulation Plates

Roll Width	Thickness	m ² / Roll	€ / m ²	€ / Roll
1 m	6 mm	30	2.80	84.13
1 m	9 mm	20	3.04	60.77
1 m	10 mm	20	3.16	63.11
1 m	13 mm	14	3.44	48.20
1 m	19 mm	10	4.18	41.80
1 m	25 mm	8	5.39	43.09
1 m	32 mm	6	6.55	39.27
1 m	40 mm	4	9.88	39.53
1 m	50 mm	4	11.50	46.00

Roll Width	Thickness	m ² / Roll	€ / m ²	€ / Roll
1,2 m	6 mm	36	2.80	100.96
1,2 m	9 mm	24	3.04	72.93
1,2 m	10 mm	24	3.16	75.74
1,2 m	13 mm	16,8	3.44	57.84
1,2 m	19 mm	12	4.18	50.16
1,2 m	25 mm	9,6	5.39	51.71
1,2 m	32 mm	7,2	6.55	47.13
1,2 m	40 mm	4,8	9.88	47.44
1,2 m	50 mm	4,8	11.50	55.19

Roll Width	Thickness	m ² / Roll	€ / m ²	€ / Roll
1,5 m	6 mm	45	2.80	126.20
1,5 m	9 mm	30	3.04	91.16
1,5 m	10 mm	30	3.16	94.67
1,5 m	13 mm	21	3.44	72.30
1,5 m	19 mm	15	4.18	62.70
1,5 m	25 mm	12	5.39	64.64
1,5 m	32 mm	9	6.55	58.91
1,5 m	40 mm	6	9.88	59.30
1,5 m	50 mm	6	11.50	68.99



Aluminum Foil Coated Insulation Plate

Roll Width	Thickness	m ² / Roll	€ / m ²	€ / Roll
1 m	6 mm	30	2.39	71.84
1 m	9 mm	20	2.63	52.58
1 m	10 mm	20	2.75	54.92
1 m	13 mm	14	3.03	42.46
1 m	19 mm	10	3.77	37.70
1 m	25 mm	8	4.98	39.81
1 m	32 mm	6	6.14	36.81
1 m	40 mm	4	9.47	37.89
1 m	50 mm	4	11.09	44.36

Roll Width	Thickness	m ² / Roll	€ / m ²	€ / Roll
1,2 m	6 mm	36	2.39	86.21
1,2 m	9 mm	24	2.63	63.09
1,2 m	10 mm	24	2.75	65.90
1,2 m	13 mm	16,8	3.03	50.95
1,2 m	19 mm	12	3.77	45.25
1,2 m	25 mm	9,6	4.98	47.78
1,2 m	32 mm	7,2	6.14	44.18
1,2 m	40 mm	4,8	9.47	45.47
1,2 m	50 mm	4,8	11.09	53.23



Fireproof Acoustic Nfaf Foam

	Thickness	Aspect (mm)	1Box = (m ²)
Acoustic Nfaf	5 mm	600x1000 mm	30
	6 mm		30
	10 mm		20
	15 mm		15
	20 mm		10
	25 mm		10
	30 mm		5



Self-Adhesive

Aluminum Foil Coated Insulation Plates

Roll Width	Thickness	m ² / Roll	€ / m ²	€ / Roll
1 m	6 mm	30	3.92	117.51
1 m	9 mm	20	4.15	83.02
1 m	10 mm	20	4.27	85.36
1 m	13 mm	14	4.56	63.77
1 m	19 mm	10	5.29	52.93
1 m	25 mm	8	6.50	51.99
1 m	32 mm	6	7.66	45.95
1 m	40 mm	4	11.00	43.98
1 m	50 mm	4	12.61	50.44

Roll Width	Thickness	m ² / Roll	€ / m ²	€ / Roll
1,2 m	6 mm	36	3.92	141.01
1,2 m	9 mm	24	4.15	99.63
1,2 m	10 mm	24	4.27	102.44
1,2 m	13 mm	16,8	4.56	76.52
1,2 m	19 mm	12	5.29	63.51
1,2 m	25 mm	9,6	6.50	62.39
1,2 m	32 mm	7,2	7.66	55.14
1,2 m	40 mm	4,8	11.00	52.78
1,2 m	50 mm	4,8	12.61	60.53



PVC Reinforced

Aluminum Foil Coated Insulation Plates

Roll Width	Thickness	m ² / Roll	€ / m ²	€ / Roll
1 m	6 mm	30	6.55	196.55
1 m	9 mm	20	6.79	135.71
1 m	10 mm	20	6.90	138.06
1 m	13 mm	14	7.19	100.66
1 m	19 mm	10	7.93	79.27
1 m	25 mm	8	9.13	73.07
1 m	32 mm	6	10.29	61.76
1 m	40 mm	4	13.63	54.52
1 m	50 mm	4	15.25	60.98



PVC Reinforced Self Adhesive

Aluminum Foil Coated Insulation Plates

Roll Width	Thickness	m ² / Roll	€ / m ²	€ / Roll
1 m	6 mm	30	8.31	249.24
1 m	9 mm	20	8.54	170.84
1 m	10 mm	20	8.66	173.19
1 m	13 mm	14	8.95	125.25
1 m	19 mm	10	9.68	96.84
1 m	25 mm	8	10.89	87.12
1 m	32 mm	6	12.05	72.30
1 m	40 mm	4	15.39	61.55
1 m	50 mm	4	17.00	68.01



Elastomeric Rubber Pipe Insulation

Copper Inch	Tube inner diameters steel Inch	mm	Flesh Thickness								
			€ / m	6 mm		€ / m	9 mm		€ / m	13 mm	
				€ / Box	m / Box		€ / Box	m / Box		€ / Box	m / Box
1/4"		6	0.09	47.17	530	0.11	42.05	382	0.20	45.64	0.20
5/16"		8	0.09	41.45	460	0.12	38.94	326	0.22	46.11	0.21
3/8"	1/8"	10	0.09	36.17	396	0.13	39.06	306	0.22	39.64	0.22
1/2"		12	0.11	40.51	376	0.14	38.29	268	0.23	37.97	0.22
5/8"		15	0.12	32.15	286	0.17	34.34	208	0.27	40.94	0.27
3/4"	3/8"	18	0.13	31.03	250	0.19	35.55	184	0.29	38.49	0.29
7/8"	1/2"	22				0.20	34.23	168	0.31	32.64	0.31
1"		25				0.22	31.89	148	0.34	34.07	0.34
1 1/8"	3/4"	28				0.24	24.48	104	0.37	32.87	0.37
1 3/8"	1"	35				0.28	26.98	96	0.42	28.74	0.42
1 5/8"	1 1/4"	42				0.32	28.67	90	0.50	26.94	0.50
	1 1/2"	48				0.37	29.98	80	0.56	25.96	0.56
2 1/8"		54				0.47	26.23	56	0.63	27.62	0.62
2 3/8"	2"	60				0.46	24.91	54	0.62	27.26	0.62
		64				0.64	34.78	54	0.77	29.41	0.77
3"	2 1/2"	76				0.71	35.3	50	0.80	30.26	0.79
3 1/8"		80				0.82	40.98	50	0.88	29.86	0.87
3 1/2"	3"	89				0.78	37.49	48	0.87	29.42	0.86
		102				1.15	36.68	32	1.23	34.43	1.22
4 1/4"		108				1.34	42.98	32	1.51	42.26	1.50
4 1/2"	4"	114				1.17	37.32	32	1.34	37.41	1.33

Aluminum Foil Coated

Elastomeric Rubber Pipe Insulation

Copper Inch	Tube inner diameters steel Inch	mm	Flesh Thickness								
			€ / m	9 mm		€ / m	13 mm				
				€ / Box	m / Box		€ / Box	m / Box			
7/8"	1/2"	22	0.72	120.39	168	1.02	106.44	104			
1 1/8"	3/4"	28	0.90	93.65	104	1.28	112.52	88			
1 3/8"	1"	35	1.04	99.48	96	1.47	100.01	68			
1 5/8"	1 1/4"	42	1.17	104.86	90	1.70	91.88	54			
	1 1/2"	48	9.09	108.95	80	1.85	85.00	46			
2 3/8"	2"	60	1.61	86.94	54	2.08	91.66	44			
3"	2 1/2"	76	2.19	109.37	50	2.54	96.38	38			
3 1/2"	3"	89	2.66	127.53	48	2.92	99.25	34			
4 1/2"	4"	114	3.55	113.54	32	4.00	112.00	28			



mm	€/m	19 mm		Flesh Thickness			32 mm		
		€/Box	m/Box	25 mm	€/Box	m/Box	€/m	€/Box	m/Box
10	0.43	44.45	104						
12	0.50	49.65	100						
15	0.49	39.16	80						
18	0.54	41.38	76	0.93	57.43	62			
22	0.57	37.64	66	0.97	54.30	56	1.81	61.67	34
25	0.61	36.46	60	1.01	50.53	50	1.84	55.08	30
28	0.65	37.42	58	1.05	50.47	48	1.87	48.68	26
35	0.72	34.79	48	1.13	38.38	34	1.95	50.75	26
42	0.82	32.93	40	1.41	33.72	24	2.19	48.10	22
48	0.91	32.92	36	1.48	35.61	24	2.42	48.41	20
54	1.11	35.60	32	1.87	44.96	24	2.81	50.59	18
60	1.09	30.43	28	1.69	33.72	20	2.75	44.07	16
64	1.26	32.73	26	2.06	37.10	18	3.10	43.44	14
76	1.31	31.48	24	1.93	34.74	18	3.16	44.28	14
80	1.58	37.94	24	2.58	46.37	18	3.51	49.18	14
89	1.51	33.18	22	2.35	42.32	18	3.44	41.33	12
102	1.98	35.62	18	3.37	47.21	14	4.01	48.14	12
108	2.24	40.34	18	3.51	49.10	14	4.41	52.90	12
114	2.15	38.61	18	3.19	44.64	14	4.16	41.62	10



€/m	19 mm		mm	€/m	25 mm		Flesh Thickness	€/m	32 mm	
	€/Box	m/Box			€/Box	m/Box	m/Box		€/Box	m/Box
1.68	110.82	66	22	2.55	142.69	56	56	4.54	154.27	34
1.98	114.57	58	28	2.98	142.99	48	48	4.81	125.01	26
2.23	107.19	48	35	3.40	115.70	34	34	5.12	133.23	26
2.51	100.33	40	42	3.95	94.90	24	24	5.71	125.69	22
2.72	97.93	36	48	4.00	96.11	24	24	6.29	125.81	20
3.21	89.97	28	60	4.69	93.75	20	20	7.29	116.65	16
3.80	91.17	24	76	5.34	96.13	18	18	8.22	115.05	14
4.57	100.44	22	89	6.65	119.68	18	18	9.09	109.04	12
5.97	107.39	18	114	8.70	116.93	14	14	10.78	107.78	10

AIR CONDITIONER
PLATE

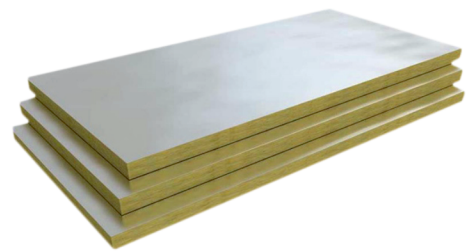




Glass Wool Air Conditioner Plate

Surface Temperature

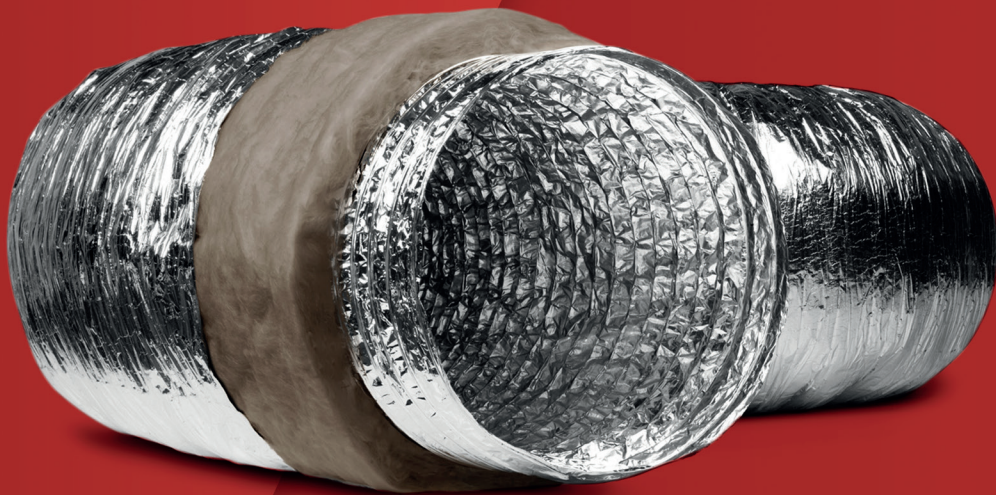
Thickness	23°C	40°C	60°C	80°C
25 mm	4	4	4	4
50 mm	4	4	4	4
25 mm	4	4	4	4
50 mm	4	4	4	4
25 mm	4	4	4	4
50 mm	4	4	6	8
25 mm	4	5	6	8
50 mm	5	6	8	12



Rock Wool Air Conditioner Plate

	Thickness	Size / mm	Kg / m ²	Box (m ²)	Piece	Heat Resistance Value (m ² /KW)
60 kg / m ²	25	600x1200 mm	1,50	11,52	16	0,69
	30		1,80	11,52	16	0,83
	40		2,40	7,20	10	1,11
	50		3,00	5,76	8	1,39

FLEXIBLE
AIR DUCTS



Optima

Aluminum Flexible Air Duct



Model	Diameter Ø	Meter / Box	Isolated € / Box	Non-Isolated € / Box
Alu Optima	Ø 102 mm	10 mt	16.86	5.74
Alu Optima	Ø 112 mm	10 mt	17.68	5.97
Alu Optima	Ø 127 mm	10 mt	18.97	6.56
Alu Optima	Ø 140 mm	10 mt	20.02	7.26
Alu Optima	Ø 152 mm	10 mt	21.90	7.73
Alu Optima	Ø 164 mm	10 mt	22.72	8.43
Alu Optima	Ø 185 mm	10 mt	24.71	9.84
Alu Optima	Ø 203 mm	10 mt	28.34	11.01
Alu Optima	Ø 229 mm	10 mt	30.56	12.41
Alu Optima	Ø 254 mm	10 mt	32.79	13.70
Alu Optima	Ø 280 mm	10 mt	35.01	15.34
Alu Optima	Ø 305 mm	10 mt	37.35	16.98
Alu Optima	Ø 315 mm	10 mt	40.52	17.45
Alu Optima	Ø 356 mm	10 mt	49.41	19.91
Alu Optima	Ø 406 mm	10 mt	59.60	24.94
Alu Optima	Ø 456 mm	10 mt	66.74	28.92
Alu Optima	Ø 508 mm	10 mt	82.79	31.26



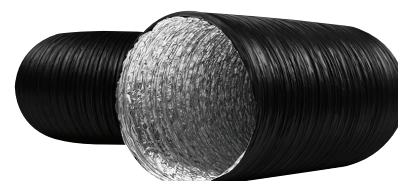
PVC Flexible Air Duct

Model	Diameter Ø	Meter / Box	PVC € / Box	Thermal € / Box
Pvc M	Ø 82 mm	10 mt	15.81	36.53
Pvc M	Ø 102 mm	10 mt	15.81	37.47
Pvc M	Ø 112 mm	10 mt	16.98	43.09
Pvc M	Ø 127 mm	10 mt	19.91	46.84
Pvc M	Ø 140 mm	10 mt	20.73	51.99
Pvc M	Ø 152 mm	10 mt	23.07	56.67
Pvc M	Ø 164 mm	10 mt	24.59	59.72
Pvc M	Ø 185 mm	10 mt	26.93	67.21
Pvc M	Ø 203 mm	10 mt	29.86	74.94
Pvc M	Ø 229 mm	10 mt	33.96	85.25
Pvc M	Ø 254 mm	10 mt	37.47	94.15
Pvc M	Ø 280 mm	10 mt	41.22	103.51
Pvc M	Ø 305 mm	10 mt	45.67	113.23
Pvc M	Ø 315 mm	10 mt	46.84	117.10
Pvc M	Ø 356 mm	10 mt	52.69	132.32
Pvc M	Ø 406 mm	10 mt	60.30	149.88
Pvc M	Ø 456 mm	10 mt	67.92	169.79
Pvc M	Ø 508 mm	10 mt	77.28	210.77



Semi Flexible Air Duct

Model	Diameter Ø	Meter / Box	Aluminum € / Box	Stainless 800° € / Box
Pvc A	Ø 80 mm	10 mt	1.41	10.54
Pvc A	Ø 100 mm	10 mt	1.52	10.96
Pvc A	Ø 110 mm	10 mt	1.58	12.65
Pvc A	Ø 127 mm	10 mt	1.76	14.19
Pvc A	Ø 140 mm	10 mt	2.11	16.44
Pvc A	Ø 150 mm	10 mt	2.28	17.56
Pvc A	Ø 160 mm	10 mt	2.52	18.69
Pvc A	Ø 180 mm	10 mt	2.87	21.22
Pvc A	Ø 200 mm	10 mt	3.10	23.04
Pvc A	Ø 230 mm	10 mt	4.33	-
Pvc A	Ø 250 mm	10 mt	4.80	28.81
Pvc A	Ø 300 mm	10 mt	5.50	35.41
Pvc A	Ø 350 mm	10 mt	7.49	41.31
Pvc A	Ø 400 mm	10 mt	9.25	46.93
Pvc A	Ø 500 mm	10 mt	12.30	58.45
Pvc A	Ø 600 mm	10 mt	14.05	-
Pvc A	Ø 700 mm	10 mt	22.25	-



Combi PVC Coated Flexible Air Duct

Model	Diameter Ø	Meter / Box	€ / Box
Combi	Ø 82 mm	10 mt	10.89
Combi	Ø 102 mm	10 mt	10.89
Combi	Ø 112 mm	10 mt	12.06
Combi	Ø 127 mm	10 mt	14.05
Combi	Ø 140 mm	10 mt	16.39
Combi	Ø 152 mm	10 mt	17.56
Combi	Ø 164 mm	10 mt	18.74
Combi	Ø 185 mm	10 mt	22.25
Combi	Ø 203 mm	10 mt	25.41
Combi	Ø 229 mm	10 mt	28.10
Combi	Ø 254 mm	10 mt	32.20
Combi	Ø 280 mm	10 mt	33.96
Combi	Ø 305 mm	10 mt	35.48
Combi	Ø 315 mm	10 mt	37.24
Combi	Ø 356 mm	10 mt	42.15
Combi	Ø 406 mm	10 mt	50.59
Combi	Ø 456 mm	10 mt	58.55
Combi	Ø 508 mm	10 mt	72.60

TURBO
VENTILATORS





TURBO VENTILATORS

H150 TV Turbo Ventilator



Model	Number of Wings (mm)	Height (mm)	Core Diameter (mm)	Lower Throat (mm)	Price €
H150 TV	16	220	290	150	18.97

G300 TV Turbo Ventilator



Model	Number of Wings (mm)	Height (mm)	Core Diameter (mm)	Lower Throat (mm)	Price €
G300TV	20	350	430	300	24.59

F400 TV Turbo Ventilator



Model	Number of Wings (mm)	Height (mm)	Core Diameter (mm)	Lower Throat (mm)	Price €
F400 TV	25	430	530	400	31.85

F450 TV Turbo Ventilator



Model	Number of Wings (mm)	Height (mm)	Core Diameter (mm)	Lower Throat (mm)	Price €
E450 TV	25	450	857080	450	32.79

D600 A TV Turbo Ventilator



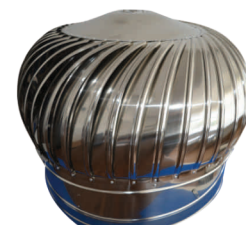
Model	Number of Wings (mm)	Height (mm)	Core Diameter (mm)	Lower Throat (mm)	Price €
D600 A TV	29	620	720	600	47.19

C680 TV Turbo Ventilator



Model	Number of Wings (mm)	Height (mm)	Core Diameter (mm)	Lower Throat (mm)	Price €
C680 TV	36	770	880	680	117.92

B800 TV Turbo Ventilator



Model	Number of Wings (mm)	Height (mm)	Core Diameter (mm)	Lower Throat (mm)	Price €
B800 TV	42	800	900	800	146.37

A880 TV Turbo Ventilator



Model	Number of Wings (mm)	Height (mm)	Core Diameter (mm)	Lower Throat (mm)	Price €
A880 TV	36	950	880	680	185.13

VENTILATION
GRILLES





Single Row

Blade Grille Without Damper

W/H	100	150	200	250	300	350	400	450	500	600	700	800	900
100	1.99	2.34	2.58	3.16	3.75	4.10	4.57	4.92	5.39	6.32	7.14	8.08	9.13
150	2.22	2.69	3.16	3.51	4.22	4.57	5.04	5.62	6.21	7.14	8.08	9.13	9.95
200	2.46	2.93	3.51	4.10	4.68	5.27	5.85	6.44	7.03	8.08	9.25	10.42	11.59
250	2.81	3.40	4.10	4.80	5.50	6.09	6.79	7.49	8.08	9.48	10.77	12.18	13.47
300	3.16	3.86	4.68	5.39	6.21	7.03	7.73	8.55	9.25	10.89	12.41	13.93	15.46
350	3.51	4.33	5.27	6.09	7.03	7.85	8.67	9.60	10.42	12.18	13.93	15.69	17.45
400	3.86	4.80	5.85	6.79	7.73	8.67	9.72	10.66	11.59	13.58	15.46	17.45	19.32
450	4.22	5.27	6.32	7.49	8.55	9.60	10.66	11.71	12.76	14.87	17.10	19.20	21.31
500	4.57	5.74	6.91	8.08	9.25	10.42	11.59	12.76	13.93	16.28	18.62	20.96	23.30
600	5.39	6.67	8.08	9.37	10.77	12.18	13.47	14.87	16.28	18.97	21.66	24.47	27.17
700	6.09	7.61	9.25	10.77	12.30	13.93	15.46	16.98	18.62	21.66	24.82	27.99	31.03
800	6.79	8.55	10.30	12.06	13.82	15.57	17.33	19.09	20.84	24.36	27.87	31.38	34.89
900	7.49	9.48	11.48	13.47	15.34	17.33	19.32	21.19	23.19	27.05	31.03	34.89	38.88
1000	8.31	10.42	12.65	14.75	16.86	19.09	21.19	23.30	25.53	29.86	34.07	38.41	42.74



Single Row Blade

Grille with Damper

W/H	100	150	200	250	300	350	400	450	500	600	700	800	900
100	3.51	4.10	4.57	5.74	6.56	7.26	8.43	9.37	10.54	12.41	13.82	15.22	17.33
150	4.10	4.92	5.85	6.44	7.61	8.20	9.37	10.54	11.48	13.58	15.11	16.51	18.74
200	4.92	5.50	6.67	7.61	8.43	9.25	10.42	11.36	12.65	14.75	16.86	18.74	20.61
250	5.27	6.09	7.61	8.43	9.48	10.54	11.71	12.76	13.82	16.28	18.27	20.96	22.95
300	5.74	7.03	8.43	9.60	10.89	12.18	13.47	14.75	16.04	17.92	21.31	23.77	26.35
350	6.56	7.96	9.48	10.89	12.41	13.82	15.22	16.86	18.27	19.44	24.12	27.17	30.09
400	7.26	8.90	10.54	12.18	13.82	15.46	17.21	18.85	20.49	20.73	27.05	30.44	33.72
450	7.96	9.84	11.59	13.58	15.34	17.21	18.97	20.84	22.72	21.66	30.09	33.72	37.35
500	8.67	10.77	12.76	14.75	16.74	20.02	20.84	22.83	24.94	26.46	33.02	37.00	41.10
600	10.30	12.53	14.99	17.33	19.79	22.13	24.47	26.93	29.27	29.98	38.76	43.68	48.36
700	11.71	14.40	17.21	20.02	22.72	25.53	28.22	30.91	33.72	33.37	44.73	50.23	55.74
800	13.23	16.28	19.44	22.48	25.64	28.69	31.85	35.01	38.06	37.59	50.59	56.79	63.00
900	14.64	18.15	21.66	25.18	28.57	32.08	35.60	38.99	42.51	41.69	56.44	63.35	70.37
1000	16.16	20.02	23.89	27.75	31.50	35.48	39.23	43.09	46.96	46.25	62.30	70.02	77.75
1100	17.68	21.90	26.11	30.33	34.43	38.64	42.97	47.19	51.41	50.82	68.15	76.58	85.13
1200	19.09	23.77	28.34	32.90	37.47	42.04	46.60	51.17	55.85	55.27	74.12	83.26	92.39



VENTILATION GRILLES



Double Row

Blade Grille Without Damper

W/H	100	150	200	250	300	350	400	450	500	600	700	800	900
100	3.51	4.22	4.80	5.50	6.32	7.03	7.49	8.20	8.78	9.84	11.01	13.23	14.17
150	3.75	4.45	5.04	5.85	6.56	7.26	7.96	8.78	9.48	10.89	12.30	14.05	15.34
200	3.98	4.68	5.27	6.09	7.03	7.61	8.55	9.37	10.30	12.06	13.82	15.57	17.33
250	4.33	5.15	5.85	7.03	7.96	9.02	10.07	11.12	12.18	14.29	16.28	18.38	20.49
300	4.80	5.74	6.79	7.96	9.13	10.42	11.59	12.88	14.05	16.39	18.85	21.31	23.77
350	5.15	6.32	7.61	9.02	10.42	11.83	13.11	14.52	15.93	18.62	21.43	24.24	26.93
400	5.50	6.91	8.43	10.07	11.59	13.11	14.64	16.16	17.80	20.84	23.89	27.05	30.09
450	5.97	7.61	9.37	11.01	12.88	14.52	16.16	17.92	19.67	23.07	26.46	29.98	33.37
500	6.44	8.31	10.19	12.06	13.93	15.93	17.80	19.67	21.55	25.29	29.04	32.79	36.53
600	7.49	9.72	11.94	14.17	16.39	18.62	20.84	23.07	25.29	29.74	34.19	38.64	42.97
700	8.67	11.24	13.70	16.28	18.85	21.43	23.89	26.46	29.04	34.19	39.23	44.38	49.41
800	9.72	12.65	15.46	18.38	21.31	24.12	27.05	29.98	32.79	38.64	44.38	50.12	55.85
900	10.77	14.05	17.21	20.49	23.65	26.93	30.09	33.37	36.53	42.97	49.41	55.85	62.30
1000	11.94	15.46	18.97	22.60	26.11	29.63	33.26	36.77	40.40	47.42	54.57	61.71	68.74
1100	13.00	16.86	20.73	24.71	28.57	32.44	36.30	40.16	44.15	51.87	59.72	67.45	75.18
1200	14.05	18.27	22.48	26.70	31.03	35.25	39.46	43.68	47.89	56.32	64.75	73.19	81.62



Double Row

Double Row Blade Grille With Damper

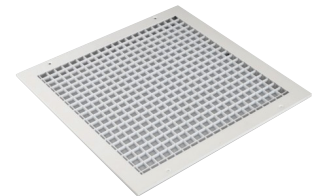
W/H	100	150	200	250	300	350	400	450	500	600	700	800	900
100	4.92	5.97	6.91	7.96	9.02	10.07	11.24	12.65	13.35	15.57	17.33	19.91	22.01
150	5.50	6.44	7.61	8.67	9.72	10.77	12.06	13.58	14.64	17.10	18.97	20.49	23.65
200	6.21	7.03	8.43	9.37	10.66	11.59	13.23	14.17	15.57	18.38	20.61	23.19	25.53
250	6.79	7.96	9.84	10.77	11.94	13.47	14.87	16.39	17.92	20.84	23.77	26.70	29.74
300	7.49	9.02	10.77	12.18	13.82	15.57	17.33	19.09	20.84	24.24	27.75	31.15	34.66
350	8.20	9.95	11.83	13.82	15.81	17.80	19.67	21.78	23.77	27.63	31.62	35.71	39.58
400	9.13	11.01	13.11	15.46	17.68	19.91	22.13	24.36	26.70	31.03	35.48	40.05	44.50
450	9.95	12.18	14.64	17.10	19.67	22.13	24.47	27.05	29.63	34.54	39.46	44.50	49.41
500	10.66	13.35	16.04	18.74	21.43	24.36	27.05	29.74	32.55	37.94	43.44	48.83	54.33
600	12.41	15.57	18.85	22.13	25.41	28.57	31.85	35.13	38.29	44.85	51.29	57.85	64.17
700	14.29	18.03	21.66	25.53	29.27	33.02	36.65	40.40	44.15	51.76	59.13	66.63	74.12
800	16.16	20.37	24.59	28.81	33.14	37.24	41.57	45.90	50.00	58.55	67.10	75.53	83.96
900	17.92	22.72	27.40	32.20	36.89	41.69	46.37	51.17	55.85	65.34	74.82	84.31	93.79
1000	19.79	25.06	30.21	35.60	40.75	46.02	51.29	56.56	61.83	72.25	82.79	93.33	103.75
1100	21.66	27.40	33.14	38.99	44.61	50.35	56.09	61.83	67.68	79.16	90.63	102.11	113.58
1200	23.42	29.74	35.95	42.15	48.59	54.80	61.01	67.21	73.54	85.95	98.48	111.01	123.42

*All prices are arranged in €



Blade Grille Without Damper

W/H	50	75	100	125	150	175	200	225	250	300	400	500	600
100	2.34	2.69	3.16	3.75	4.33	4.92	5.39	5.97	6.56	7.49	9.72	11.71	13.47
150	2.58	2.93	3.63	4.22	4.80	5.50	6.09	6.67	7.38	8.43	10.89	13.11	15.22
200	2.81	3.28	3.98	4.68	5.39	6.09	6.79	7.49	8.20	9.37	12.06	14.64	16.98
250	3.16	3.63	4.33	5.15	5.85	6.67	7.49	8.20	9.02	10.30	13.35	16.16	18.62
300	3.51	3.86	4.92	5.85	6.79	7.61	8.55	9.48	10.30	11.83	15.46	18.74	21.66
350	3.75	4.33	5.27	6.32	7.26	8.20	9.25	10.19	11.12	12.76	16.63	20.14	23.30
400	4.33	4.92	6.09	7.26	8.31	9.48	10.54	11.71	12.76	14.64	19.09	23.19	26.70
450	4.80	5.62	6.91	8.08	9.37	10.66	11.94	13.23	14.40	16.51	21.55	26.11	30.09
500	5.50	6.44	7.85	9.37	10.77	12.30	13.70	15.22	16.63	18.97	24.94	30.21	34.89
600	6.09	7.03	8.67	10.19	11.83	13.47	15.11	16.74	18.27	20.84	27.28	33.14	38.29
700	6.56	7.61	9.37	11.12	12.88	14.64	16.39	18.27	19.91	22.72	29.74	36.07	41.69
800	7.85	9.02	11.12	13.23	15.34	17.45	19.56	21.66	23.77	27.17	35.48	43.09	49.77
900	9.02	10.42	12.88	15.34	17.80	20.26	22.72	25.18	27.63	31.50	41.33	50.12	57.96
1000	10.07	11.71	14.40	17.21	19.91	22.72	25.41	28.22	30.91	35.25	46.25	56.09	64.75
1100	11.36	13.11	16.16	19.32	22.37	25.53	28.57	31.73	34.78	39.70	51.99	63.11	72.95
1200	12.53	14.52	17.92	21.43	24.82	28.34	31.73	35.13	38.64	44.03	57.85	70.14	81.03



12mm x 12mm

Square Honeycomb Grille

W/H	100	150	200	250	300	350	400	450	500	600	700	800	900
100	1.87	2.11	2.34	2.46	3.04	3.40	3.63	3.98	4.45	5.04	5.62	6.21	6.91
150	2.22	2.58	2.81	3.04	3.51	3.86	4.33	4.68	5.04	5.85	6.67	7.49	8.31
200	2.58	2.81	3.28	3.63	4.10	4.57	5.04	5.50	6.09	7.03	7.96	8.90	9.95
250	2.81	3.28	3.63	4.22	4.68	5.27	5.85	6.44	7.03	8.08	9.25	10.42	11.48
300	3.04	3.51	4.10	4.80	5.39	5.97	6.67	7.26	7.96	9.25	10.54	11.71	13.00
350	3.51	3.98	4.57	5.27	6.09	6.79	7.49	8.20	8.90	10.30	11.71	13.23	14.64
400	3.75	4.33	5.04	5.85	6.67	7.49	8.20	9.02	9.84	11.48	13.00	14.64	16.16
450	4.10	4.68	5.50	6.44	7.26	8.20	9.02	9.84	10.77	12.53	14.29	16.04	17.80
500	4.45	5.04	5.97	7.03	7.96	8.90	9.84	10.77	11.71	13.58	15.57	17.45	19.32
600	5.04	5.85	7.03	8.08	9.25	10.30	11.36	12.53	13.58	15.81	18.03	20.26	22.48
700	5.74	6.67	7.96	9.25	10.42	11.71	13.00	14.29	15.57	18.03	20.61	23.19	25.64
800	6.32	7.49	8.90	10.30	11.71	13.23	14.64	16.04	17.45	20.26	23.19	26.00	28.81
900	6.91	8.31	9.84	11.48	13.00	14.64	16.16	17.80	19.32	22.48	25.64	28.81	31.97
1000	7.61	9.13	10.89	12.53	14.29	16.04	17.80	19.56	21.31	24.71	28.22	31.73	35.13
1100	8.08	9.95	11.83	13.70	15.57	17.45	19.32	21.31	23.19	26.93	30.68	34.54	38.29
1200	8.78	10.77	12.76	14.87	16.86	18.97	20.96	23.07	25.06	29.16	33.26	37.35	41.45



VENTILATION GRILLES



Fixed Blade

External Air Shutter

W/H	250	300	350	400	500	600	800	1000	1200	1400	1600	1800	2000
300	9.02	10.30	11.48	12.65	15.11	17.56	22.48	27.28	32.20	37.12	41.92	46.84	51.64
350	10.07	11.48	12.76	14.17	16.86	19.67	25.18	30.91	36.07	41.45	46.96	52.34	57.85
400	11.12	12.65	14.17	15.69	18.74	21.66	27.75	33.84	39.81	45.90	51.87	57.96	64.17
450	12.18	13.82	15.46	17.10	20.49	23.77	30.44	37.00	43.68	50.23	56.91	63.58	70.14
500	13.23	14.99	16.86	18.62	22.25	25.88	33.02	40.28	47.54	54.68	61.94	69.09	76.35
600	15.34	17.45	19.44	21.55	25.76	29.98	38.41	46.72	55.15	63.47	71.90	80.21	88.52
700	17.33	19.67	22.01	24.47	29.27	34.07	43.56	53.04	62.65	72.25	81.73	91.33	100.82
800	19.32	22.01	24.71	27.40	32.79	38.17	48.83	59.60	70.26	81.03	91.69	102.46	113.23
900	21.43	24.47	27.40	30.33	36.30	42.27	54.10	66.04	77.99	89.81	101.76	113.58	125.53
1000	23.54	26.81	30.09	33.37	39.81	46.37	59.48	72.48	85.60	98.59	111.71	124.82	137.82
1200	27.75	31.62	35.48	39.23	46.96	54.68	70.02	85.48	100.82	116.28	131.62	147.07	162.53
1400	31.85	36.30	40.75	45.20	54.10	62.88	80.68	98.36	116.16	134.19	151.64	169.32	187.12
1600	36.07	41.10	46.14	51.17	61.12	71.19	91.33	111.36	131.38	151.52	171.55	191.69	211.71
1800	40.28	45.78	51.41	57.03	68.27	79.51	101.87	124.36	146.72	169.09	191.57	213.93	236.42
2000	44.38	50.59	56.79	63.00	75.41	87.70	112.53	137.24	162.06	186.77	211.48	236.30	261.01
2200	48.59	55.39	62.18	68.85	82.44	96.02	123.07	150.23	177.28	204.45	231.50	258.55	285.71



Volumetric

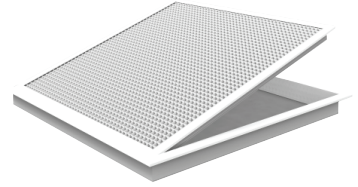
Air Adjustment Damper

W/H	100	200	300	400	500	600	700	800	900	1000
150	4.92	6.32	8.43	9.84	12.06	14.17	16.39	18.50	20.73	22.83
200	5.50	7.03	9.25	11.24	13.70	16.16	18.50	20.96	23.42	25.76
250	5.97	7.61	9.95	12.65	15.22	18.03	20.73	23.42	26.11	28.92
300	6.56	8.20	12.06	13.82	16.86	19.91	22.95	25.88	28.92	31.97
350	7.03	10.07	13.23	15.22	18.50	21.90	25.06	28.45	31.73	35.01
400	7.49	10.54	13.82	16.51	20.02	23.65	27.28	30.91	34.54	38.06
450	8.08	11.12	14.75	17.80	21.66	25.64	29.51	33.37	37.24	41.22
500	8.55	11.71	15.46	19.09	23.30	27.52	31.73	35.95	40.05	44.26
600	9.60	13.00	17.21	21.78	26.58	31.26	36.07	40.87	45.67	50.47
700	10.66	14.17	19.09	24.36	29.74	35.13	40.52	45.90	51.17	56.56
800	11.71	15.46	21.08	27.05	33.02	38.88	44.85	50.82	56.79	62.76
900	12.76	16.98	23.19	29.63	36.18	42.74	49.30	55.85	62.30	68.85
1000	13.70	18.15	25.18	32.32	39.46	46.60	53.63	60.77	67.92	77.52

*All prices are arranged in €

Cased and Hinged

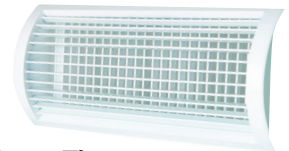
Black Honeycomb Grille



W/H	100	150	200	250	300	350	400	450	500	600	700	800	900
100	3.51	4.10	4.68	6.09	6.56	7.14	7.73	8.31	8.90	9.95	11.12	12.18	13.35
150	4.10	4.80	5.50	6.91	7.49	8.20	8.78	9.48	10.07	11.36	12.65	13.93	15.22
200	4.80	5.50	6.21	7.73	8.43	9.13	9.95	10.66	11.36	12.76	14.29	15.69	17.21
250	5.39	6.21	7.03	8.55	9.37	10.19	11.01	11.83	12.65	14.17	15.81	17.45	19.09
300	5.97	6.91	7.73	9.37	10.30	11.24	12.06	13.00	13.82	15.69	17.45	19.20	20.96
350	6.56	7.49	8.55	10.30	11.24	12.18	13.11	14.17	15.11	17.10	18.97	20.96	22.83
400	7.14	8.20	9.25	11.12	12.18	13.23	14.29	15.34	16.39	18.50	20.61	22.72	24.82
450	7.73	8.90	10.07	11.94	13.11	14.17	15.34	16.51	17.56	19.91	22.13	24.36	26.70
500	8.31	9.60	10.77	12.76	14.05	15.22	16.39	17.68	18.85	21.31	23.77	26.11	28.57
600	9.60	10.89	12.30	14.52	15.81	17.21	18.62	20.02	21.31	24.12	26.81	29.63	32.44
700	9.60	12.30	13.82	16.16	17.68	19.20	20.84	22.37	23.89	26.93	29.98	33.14	36.18
800	11.94	13.70	15.34	17.80	19.56	21.31	22.95	24.71	26.35	29.74	33.14	36.53	40.05
900	13.11	14.99	16.86	19.56	21.43	23.30	25.18	27.05	28.92	32.55	36.30	40.05	43.79
1000	14.40	16.39	18.38	21.19	23.30	25.29	27.28	29.39	31.38	35.48	39.46	43.56	47.66
1100	15.57	17.68	19.91	22.95	25.06	27.28	29.51	31.73	33.84	38.29	42.62	47.07	51.41
1200	16.74	19.09	21.43	24.59	26.93	29.27	31.62	34.07	36.42	41.10	45.78	50.47	55.27

Aluminum Round

Duct Grill



ALN WxH (CM2)	Parallel Blade Tipper		Without Tipper	
	Single Row	Double Row	Single Row	Double Row
100 - 250	7.26	7.85	5.15	5.74
251 - 500	11.01	11.48	7.03	7.49
501 - 750	13.00	16.28	8.08	11.36
751 - 1000	14.52	16.86	8.78	11.12
1001 - 1250	16.39	19.79	9.84	13.23
1251 - 1500	18.27	22.48	10.77	14.99
1501 - 1750	20.26	24.82	11.36	15.93
1751 - 2000	21.66	26.81	11.83	16.98
2001 - 2250	23.42	29.16	12.41	18.15
2251 - 2500	25.41	31.85	13.58	20.02
2501 - 2750	27.05	34.07	14.17	21.19
2751 - 3000	28.10	35.95	14.52	22.37
3001 - 3250	31.15	40.05	16.39	25.29
3251 - 3500	31.97	41.33	16.86	26.23
3501 - 3750	34.43	44.03	18.27	27.87
3751 - 4000	36.18	46.49	19.09	29.39
4001 - 4250	38.41	48.36	20.26	30.21
4251 - 4500	39.81	50.00	20.61	30.80



Slot Diffuser

Slot Piece	W 1000	Distribitor	Picker
1		11.71	10.30
2		17.56	14.52
3		23.42	18.74
4		28.10	22.25
5		34.89	27.52
6		45.67	38.06

*Prices are arranged in €



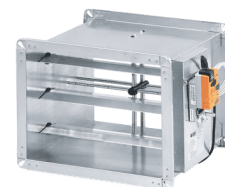
Square Anemostat

WxH	Parallel Blade Tipper	Price €	Without Tipper
150 x 150	9.25		7.49
225 X 225	12.53		9.60
300 x 300	16.39		11.71
375 X 375	20.49		13.82
450 X 450	25.06		15.93



Circular Anemostat

Diameter Ø (mm)	Parallel Blade Tipper	Price €	Without Tipper
Ø 150	15.81		12.88
Ø 200	17.56		13.47
Ø 250	18.74		14.05
Ø 300	21.66		16.39
Ø 350	23.42		18.15
Ø 400	28.10		19.91
Ø 450	31.26		21.66
Ø 500	35.13		28.10



Variable Flow Adjustment Damper (V.A.V)

W/H	200	250	300	350	400	450	500	600	700	800
200	352,00									
250	359,70	368,50								
300	367,40	375,00	383,00							
350	374,00	381,00	391,00	399,00						
400	380,60	389,00	398,00	407,00	415,80					
450	386,10	396,00	406,00	414,00	423,00	430,00				
500	396,00	405,00	412,50	425,00	432,00	441,00	449,00			
550		412,50	421,00	430,00	440,00	448,00	456,00			
600			429,00	438,00	446,00	457,00	484,00	504,00		
650			437,00	446,00	455,00	464,00	495,00	514,00		
700			442,00	453,00	462,00	471,00	504,00	523,00	543,00	
800				468,00	504,00	514,00	523,00	544,00	564,00	582,00
900					523,00	533,00	545,00	564,00	584,00	604,00
1000					539,00	550,00	560,00	582,00	604,00	626,00

*Prices are arranged in €



Variable Flow Adjustment Damper (VAV)

Size W / H (mm)	Price €	
	Insulated	Non-insulated
Ø 100	335,23	322,58
Ø 125	347,88	328,90
Ø 160	366,85	335,23
Ø 200	397,90	347,88
Ø 250	430,13	366,85
Ø 315	448,50	392,15
Ø 355	473,80	436,43
Ø 400	493,35	455,40
Ø 450	511,75	474,38
Ø 500	537,05	487,03



VENTILATION GRILLES



Fire Damper

W/H	150	200	300	400	500	600	700	800
200	14.05	14.75	15.93	16.74	17.68	18.50	20.49	21.55
300	14.75	16.04	16.98	18.15	19.20	21.55	23.07	25.18
400	15.93	17.33	18.27	22.25	21.66	25.41	28.10	30.80
500	18.50	20.49	21.66	23.19	27.63	33.72	36.65	42.27
600	19.56	21.66	23.19	24.82	31.73	37.35	42.04	46.60
700	20.61	23.07	24.59	28.81	35.25	41.57	46.84	52.11
800	21.78	23.89	26.81	31.38	38.88	45.20	52.46	58.20
900	22.95	25.18	27.87	34.31	42.27	50.47	57.38	63.70
1000	24.82	26.23	29.51	36.30	45.43	54.68	64.17	70.96
1100	26.58	27.63	30.44	39.81	48.95	58.78	68.85	76.00
1200	28.81	28.92	33.02	42.15	53.16	63.70	73.77	81.73
1300	30.21	30.21	34.43	44.96	56.91	67.92	84.31	89.23
1400	31.73	31.62	35.36	46.49	58.90	72.13	86.42	93.91
1500	32.79	34.66	38.41	49.06	62.76	74.94	91.33	99.88



Hepa Filter Set

Hepa Filter + Swirl Diffuser + Box

Price €

305*305	600
457*457	650
535*535	720
575*575	820
610*610	920



Constant Flow Adjustment Damper (C.A.V)

W/H	Size (mm)	Length	Flow (m ³ /H)	Price €
Ø 100		170	70 - 200	70
Ø 125		170	100 - 280	75
Ø 160		240	180 - 500	80
Ø 200		240	250 - 900	87
Ø 250		240	500 - 1500	98
Ø 315		240	600 - 2000	109
Ø 400		295	1000 - 2700	142

Sailor Anemostat



Diameter Ø (D)	Price €
Ø 100	3.40
Ø 125	3.75
Ø 150	4.10
Ø 200	5.85

Single Walled Jet Nozzle



Diameter Ø (mm)	Price €
Q 80	10.54
Q 120	15.81
Q 150	16.98
Q 200	21.66
Q 250	23.42
Q 315	28.10
Q 400	46.84

Swirl Diffuser with Routing Blades



Size	Price €
300*300	9.37
400*400	11.71
500*500	16.39
600*600	21.08
625*625	21.08
800*800	25.76

